

GOLDSBORO, NORTH CAROLINA

TACAN Y RWY 26

TACAN GSB Chan 112	APCH CRS 261°	Rwy ldg 11,760 TDZE 109 Arprt Elev 109
---------------------------	----------------------	---

[USAF]

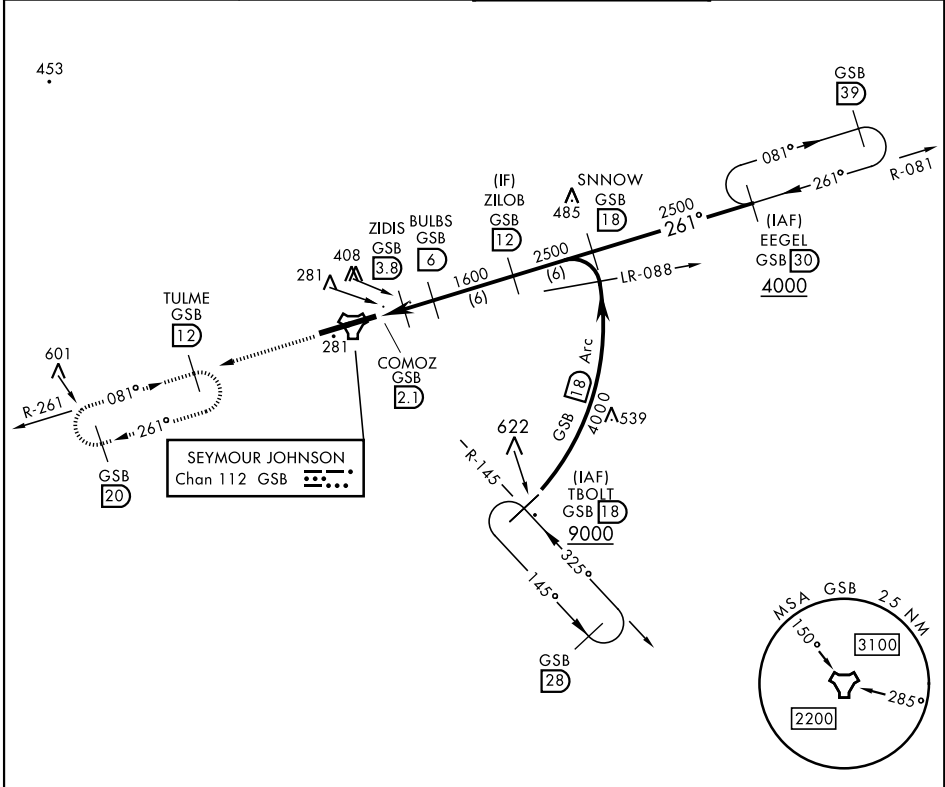
SEYMOUR JOHNSON AFB (KGSB)

▼ * When ALS inop, increase CAT AB RVR to 55, vis to 1 mile, CAT CDE vis to 1¼ miles.
 ** Circling N of Rwy 8-26 not authorized.



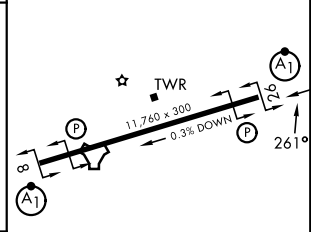
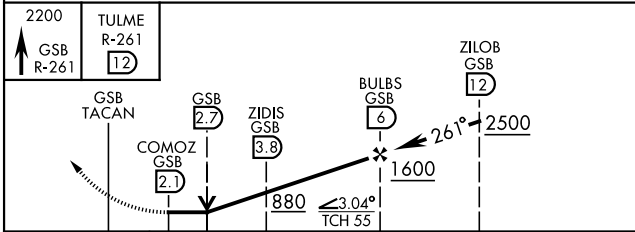
MISSED APPROACH: Climb to 2200 via GSB R-261 to TULME and hold.

ATIS ★ 317.625	APP CON 123.7 290.9 (258°-110°) 119.7 273.6 (111°-257°)	TOWER ★ 126.25 370.875	GND CON 132.45 275.8
--------------------------	---	----------------------------------	--------------------------------



EMERG SAFE ALT 100 NM 3700

ELEV	109	TDZE	109
------	-----	------	-----



CATEGORY	A	B	C	D	E
S-26 *	540/24	431 (500-½)	540/40	431 (500-¾)	
CIRCLING **	580-1 471 (500-1)	600-1 491 (500-1)	680-1½ 571 (600-1½)	740-2 631 (700-2)	740-2¼ 631 (700-2¼)

HIRL Rwy 8-26

GOLDSBORO, NORTH CAROLINA

35° 20' N - 77° 58' W

SEYMOUR JOHNSON AFB (KGSB)

Amdt 8 03NOV22

TACAN Y RWY 26

SE-2, 11 JUN 2026 to 09 JUL 2026

SE-2, 11 JUN 2026 to 09 JUL 2026