

WAAS CH 97606 W27A	APP CRS 273°	Rwy Ldg TDZE Apt Elev	6008 826 826
--	------------------------	-----------------------------	---

RNAV (GPS) RWY 27

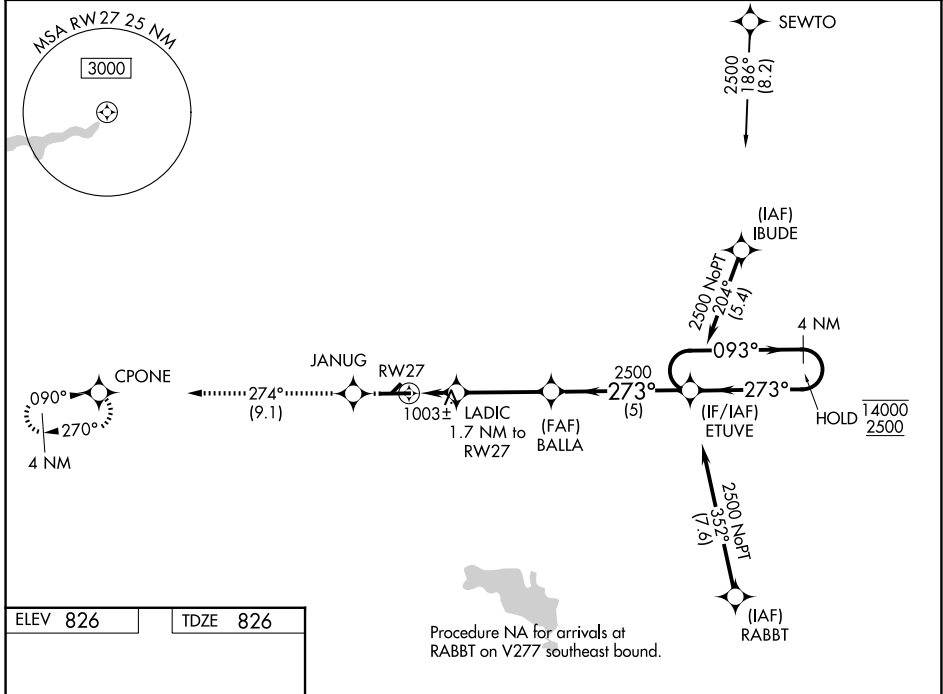
GOSHEN MUNI (GSH)

RNP APCH - GPS.

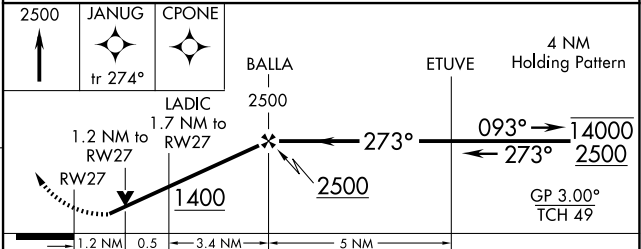
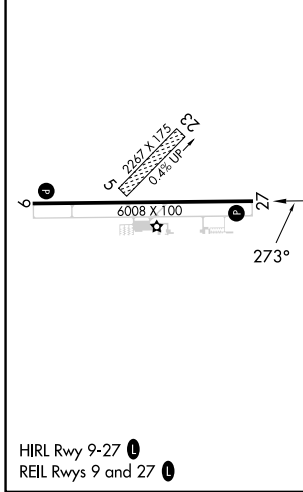
▼ Baro-VNAV and VDP NA when using ASW altimeter setting. For uncompensated Baro-VNAV systems, LNAV/VNAV NA below -16°C or above 54°C. Circling NA to Rwy 5 and 23. Rwy 27 helicopter visibility reduction below 3/4 SM NA. When local altimeter setting not received, use ASW altimeter setting and increase LPV DA to 1251 feet and all visibilities 1/2 SM. Increase LNAV/VNAV DA to 1346 feet. Increase all MDAs 40 feet and LNAV visibility Cat C/D 1/2 SM, and Circling visibility Cat D 1/4 SM.

MISSED APPROACH: Climb to 2500 direct JANUG and on 274° track to CPONE and hold.

ASOS 121.45	SOUTH BEND APP CON * 132.05 257.8	CLNC DEL 125.25	UNICOM 123.05 (CTAF) 0
-----------------------	---	---------------------------	----------------------------------



ELEV 826	TDZE 826
-----------------	-----------------



CATEGORY	A	B	C	D
LPV DA		1212-1 1/8	386 (400-1 1/8)	
LNAV/VNAV DA		1307-1 3/8	481 (500-1 3/8)	
LNAV MDA	1260-1	434 (500-1)	1260-1 1/4 434 (500-1 1/4)	1260-1 1/2 434 (500-1 1/2)
CIRCLING	1300-1 474 (500-1)	1320-1 494 (500-1)	1500-2 674 (700-2)	1560-2 1/4 734 (800-2 1/4)

EC-2, 11 JUN 2026 to 09 JUL 2026

EC-2, 11 JUN 2026 to 09 JUL 2026