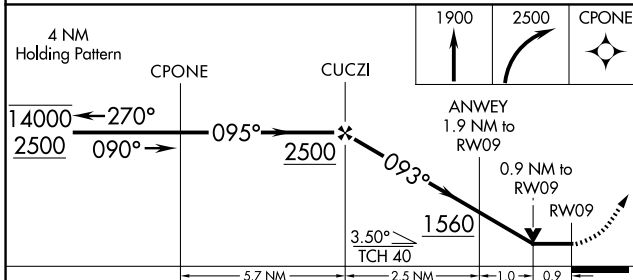
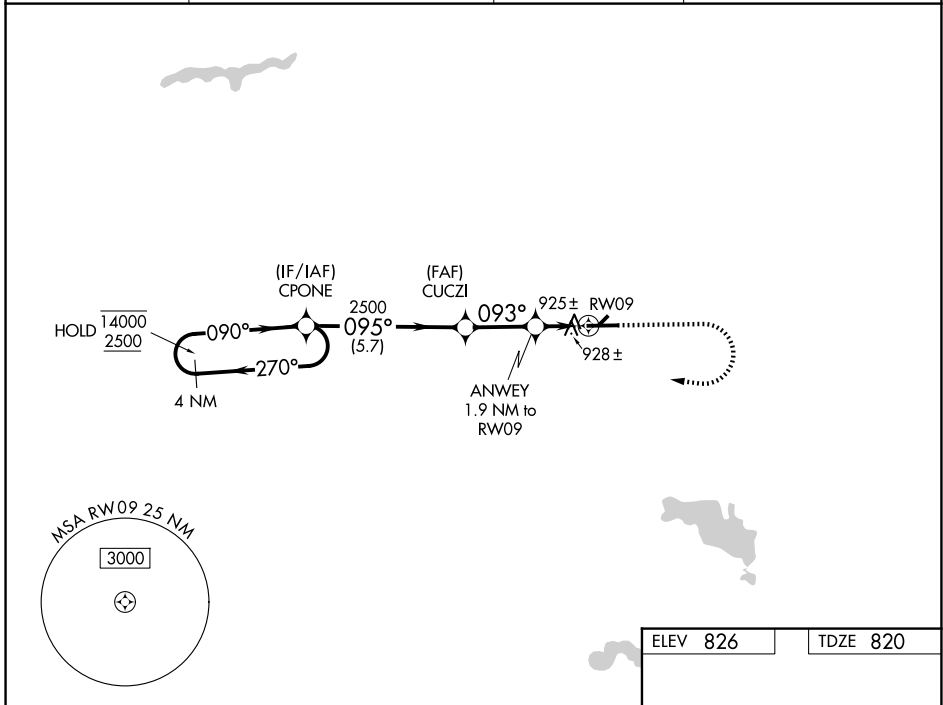


WAAS CH 69325 W09A	APP CRS 093°	Rwy Ldg 6008 TDZE 820 Apt Elev 826
--	------------------------	---

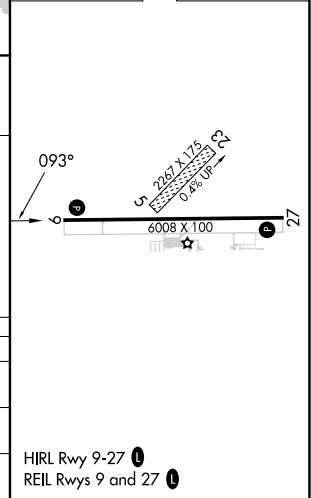
RNAV (GPS) RWY 9

GOSHEN MUNI (GSH)

RNP APCH - GPS.		MISSED APPROACH: Climb to 1900 then climbing right turn to 2500 direct CPONE and hold.			
<p>▼ Circling NA to Rwy 5 and 23. Rwy 9 helicopter visibility reduction below 3/4 SM NA. ▲ VDP NA when using ASW altimeter setting. When local altimeter setting not received, use ASW altimeter setting and increase all MDAs 40 feet; increase LP and LNAV visibility Cat C/D 1/2 SM and Circling visibility Cat D 1/4 SM.</p>		ASOS 121.45	SOUTH BEND APP CON* 132.05 257.8	CLNC DEL 125.25	UNICOM 123.05 (CTAF) 0



ELEV 826	TDZE 820
----------	----------



CATEGORY	A	B	C	D
LP MDA		1180-1	360 (400-1)	
LNAV MDA		1200-1	380 (400-1)	
CIRCLING	1300-1 474 (500-1)	1320-1 494 (500-1)	1500-2 674 (700-2)	1560-2 1/4 734 (800-2 1/4)

HIRL Rwy 9-27 0
REIL Rwy 9 and 27 0

EC-2, 11 JUN 2026 to 09 JUL 2026

EC-2, 11 JUN 2026 to 09 JUL 2026