

(HENBY.HENBY1) 25331

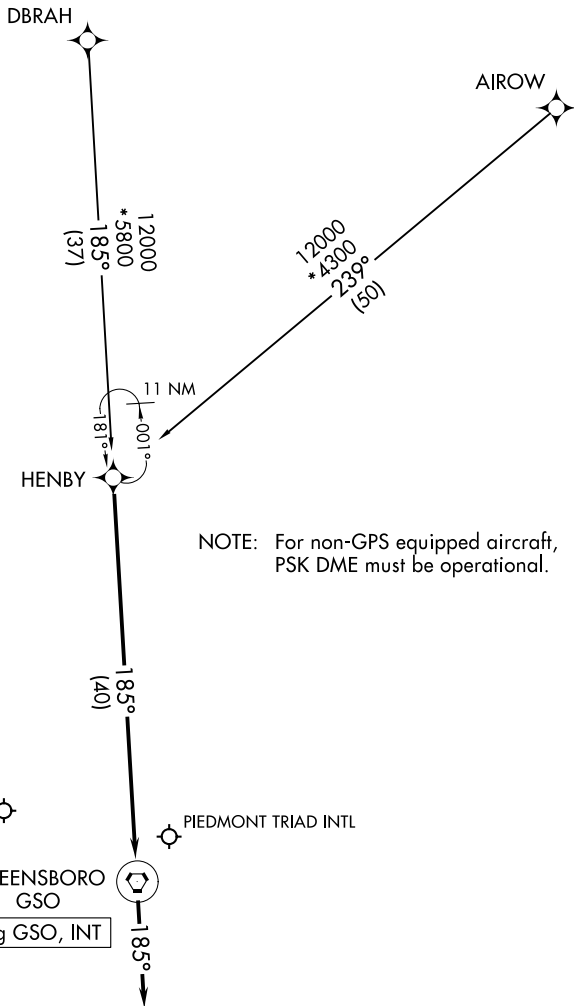
AL-178 (FAA)

HENBY ONE ARRIVAL (RNAV)

GREENSBORO, NORTH CAROLINA

GREENSBORO APP CON
 124.35 269.225 (250°-049°)
 126.6 327.075 (050°-249°)
 GSO D-ATIS
 128.55
 INT ATIS
 121.3

RNAV 1 - DME/DME/IRU or GPS. RADAR required.



NOTE: For non-GPS equipped aircraft, PSK DME must be operational.

NOTE: Chart not to scale.

ARRIVAL ROUTE DESCRIPTION

AIROW TRANSITION (AIROW.HENBY1)

DBRAH TRANSITION (DBRAH.HENBY1)

LANDING ALL AIRPORTS: From HENBY on track 185° to GSO VORTAC, then on track 185°. Expect RADAR vectors to final approach course.

HENBY ONE ARRIVAL (RNAV)

GREENSBORO, NORTH CAROLINA

(HENBY.HENBY1) 02OCT25

SE-2, 11 JUN 2026 to 09 JUL 2026

SE-2, 11 JUN 2026 to 09 JUL 2026