

TOLEDO, OHIO

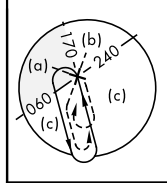
HI-ILS Y or LOC Y RWY 25

LOC/DME I-BQE 108.7 Chan 24	APCH CRS 252°	Rwy Idg 10,599 TDZE 678 Arpt Elev 684	[USAF]	EUGENE F KRANZ TOLEDO EXPRESS (KTOL)
---	-------------------------	--	--------	--------------------------------------

DME required
 * When ALS inop, increase vis to 1½ miles.

MALSRS (A5)
 MISSED APPROACH: Climb to 2500 then climbing left turn to 3000 on TOL R-170 to POUDR (TOL R-170/1.5 DME) and hold.

ATIS 118.75 290.225	TOLEDO APP CON 126.1 317.55	TOLEDO TOWER 118.1 285.4	GND CON 121.9 348.6	CLNC DEL 121.75 348.6	ASR
-------------------------------	---------------------------------------	------------------------------------	-------------------------------	---------------------------------	-----



Procedure NA for arrival on FWA VORTAC airway radials 077 CW 134.
 Procedure NA for arrival at ROD VORTAC on V47 southwest bound.

Use I-BQE DME when on the localizer course.

CARLETON
115.7 CRL
Chan 104

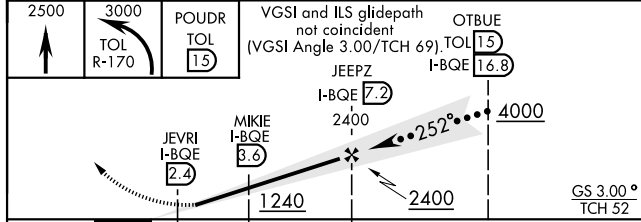
TOLEDO
Chan 72 TOL

LOCALIZER 108.7
I-BQE
Chan 24

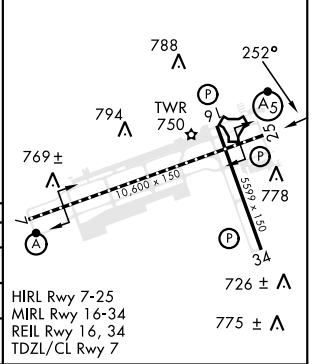
FORT WAYNE
117.8 FWA
Chan 125

ROSEWOOD
117.5 ROD
Chan 122

EMERG SAFE ALT 100 NM 3100



ELEV	684	TDZE	678
------	-----	------	-----



CATEGORY	C	D	E
S-ILS 25	945/20	267 (300-½)	
S-LOC 25 *	1200/55	522 (600-1)	
CIRCLING	1300-1¾ 616 (700-1¾)	1360-2¼ 676 (700-2¼)	1360-2½ 676 (700-2½)

HIRL Rwy 7-25
 MIRL Rwy 16-34
 REIL Rwy 16, 34
 TDZL/CL Rwy 7

TOLEDO, OHIO

41° 35'N-83° 48'W EUGENE F KRANZ TOLEDO EXPRESS (KTOL)

Amdt 6C 23JAN25

HI-ILS Y or LOC Y RWY 25

EC-2, 11 JUN 2026 to 09 JUL 2026

EC-2, 11 JUN 2026 to 09 JUL 2026