

HI-ILS or LOC Z RWY 26

LOC I-ABM 109.9	APCH CRS 258°	Rwy Idg 10,002	TDZE 8	Arprt Elev 8
---------------------------	-------------------------	-------------------	-----------	-----------------

[USAF]

LANGLEY AFB (KLF1)

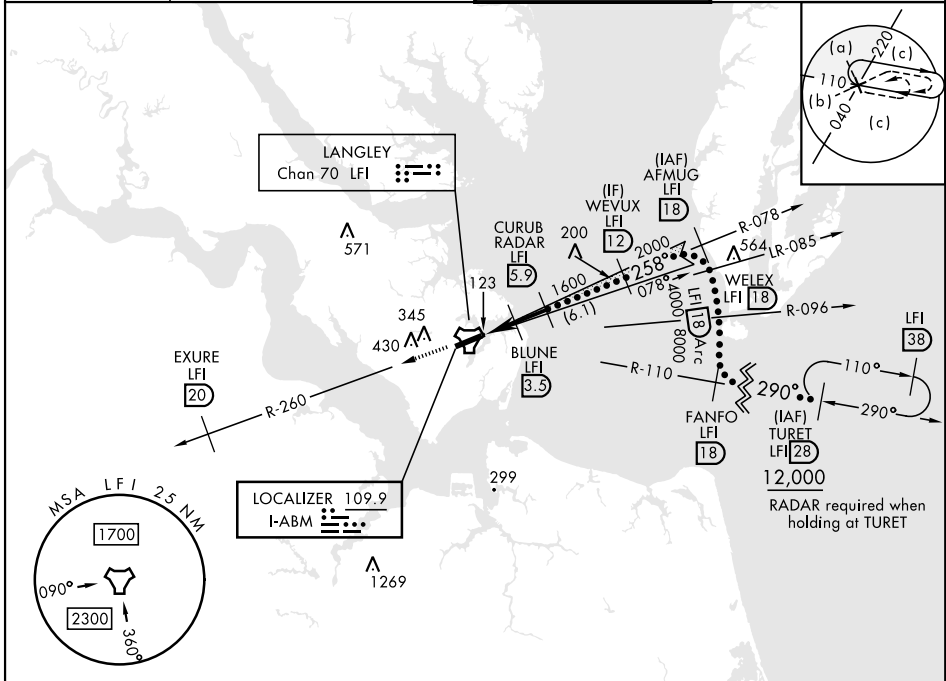
RADAR or DME required.

- ▼ *When ALS inop, increase RVR to 40, vis to 3/4 mile.
- **When ALS inop, increase RVR to 55, vis to 1 miles.
- ***Circling S of Rwy 8-26 not authorized.



MISSED APPROACH: Climb to 3000 on LFI TACAN R-260 to EXURE/20 DME, then as instructed by ATC.

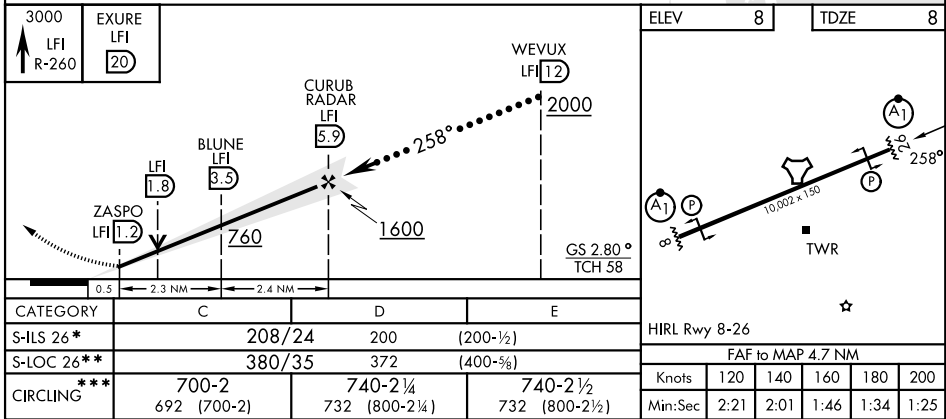
ATIS★ 270.1	NORFOLK APP CON 124.9 (311° - 009°) 126.05 (010° - 080°) 127.9 269.425 (180° - 310°)	TOWER★ 125.0 253.5	GND CON 121.7 275.8
-----------------------	--	------------------------------	-------------------------------



NE-3, 11 JUN 2026 to 09 JUL 2026

NE-3, 11 JUN 2026 to 09 JUL 2026

EMERG SAFE ALT 100 NM 4100



HI-ILS or LOC Z RWY 26