

# HI-TACAN Z RWY 26

TACAN Chan <b>70</b>	APCH CRS <b>263°</b>	Rwy ldg <b>10,002</b> TDZE Arprt Elev <b>8</b>
-------------------------	-------------------------	--

[USAF]

LANGLEY AFB (KLFJ)

▼ \* When ALS inop, increase CAT CDE vis to 1½ miles.  
 \*\* Circling S of Rwy 8-26 not authorized.



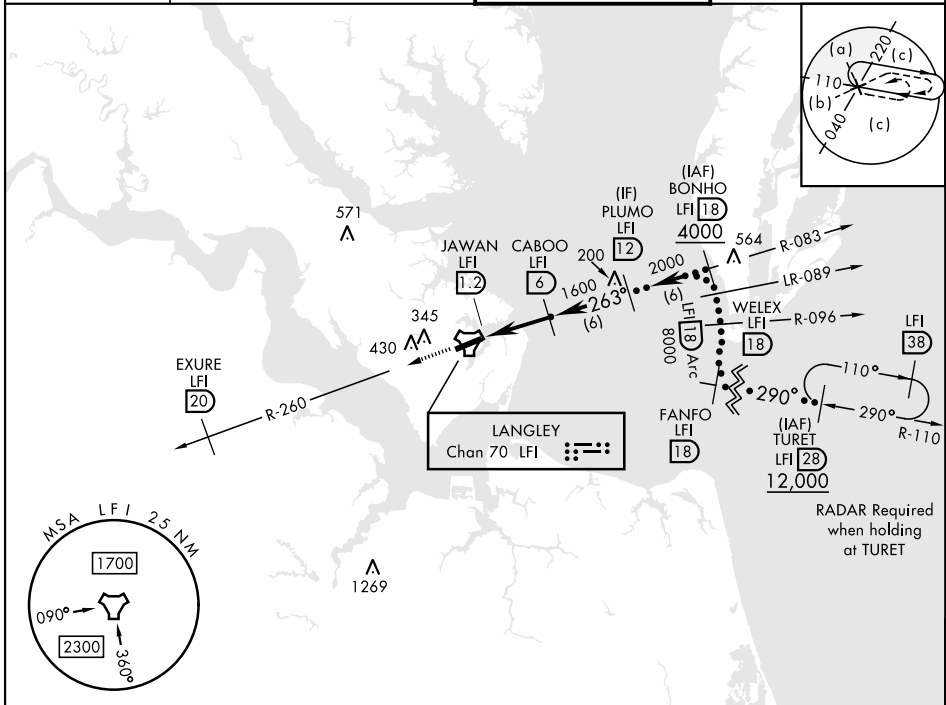
MISSED APPROACH: Climb to 3000 via LFI TACAN  
 R-260 to EXURE LFI 20 DME, then as instructed by ATC.

ATIS★  
**270.1**

NORFOLK APP CON  
**124.9** (311° - 009°)  
**126.05** (010° - 080°)  
**127.9 269.425** (180° - 310°)

TOWER★  
**125.0 253.5**

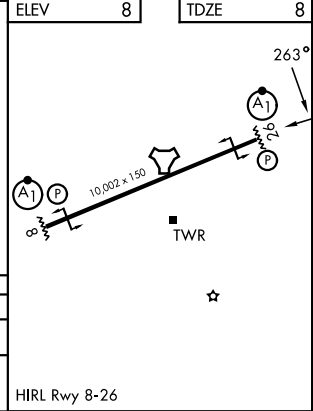
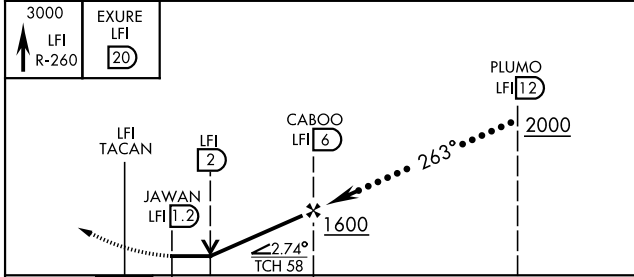
GND CON  
**121.7 275.8**



NE-3, 11 JUN 2026 to 09 JUL 2026

NE-3, 11 JUN 2026 to 09 JUL 2026

EMERG SAFE ALT 100 NM 4100



CATEGORY	C	D	E
S-26*	480/50	472	(500-1)
CIRCLING**	700-2 692 (700-2)	740-2 ¼ 732 (800-2 ¼)	740-2 ½ 732 (800-2 ½)

HIRL Rwy 8-26

# HI-TACAN Z RWY 26