

HI-TACAN Z RWY 8

TACAN LFI Chan 70	APCH CRS 073°	Rwy ldg 10,002 TDZE 8 Arprt Elev 8
--------------------------	----------------------	---

[USAF]

LANGLEY AFB (KLFJ)

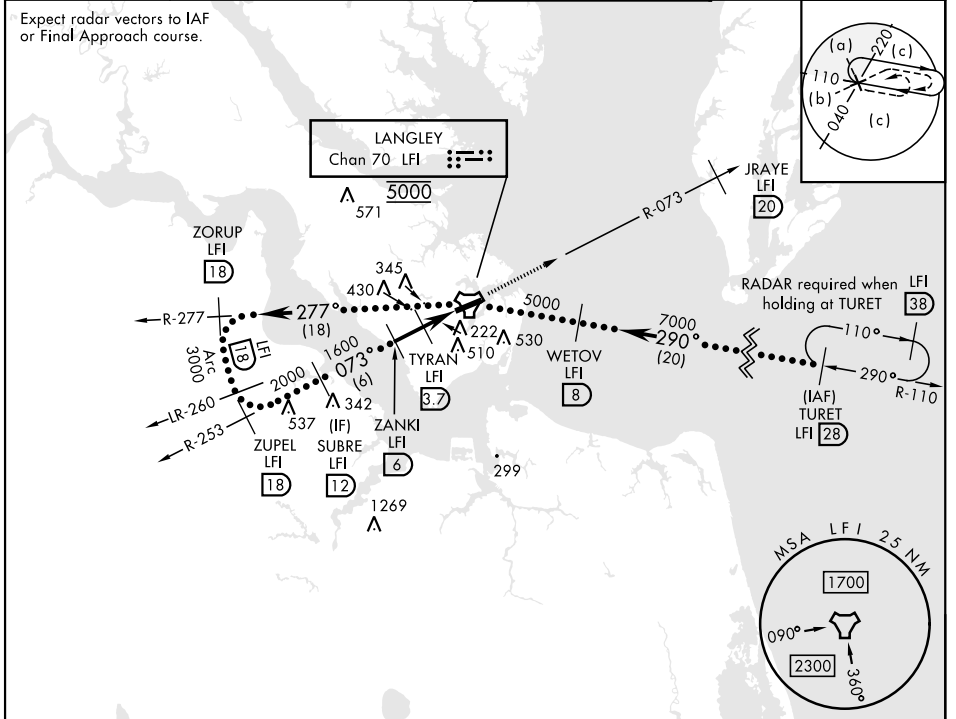
▼ * When ALS inop, increase CAT CDE vis to 1 3/8 miles.
 ** Circling S of Rwy 8-26 not authorized.

ALS-F-1 

MISSED APPROACH: Climb to 3000 via LFI TACAN R-073 to JRAYE/20 DME, then as instructed by ATC.

ATIS★ 270.1	NORFOLK APP CON 124.9 (311° - 009°) 126.05 (010° - 080°) 127.9 269.425 (180° - 310°)	TOWER★ 125.0 253.5	GND CON 121.7 275.8
-----------------------	---	------------------------------	-------------------------------

Expect radar vectors to IAF or Final Approach course.



NE-3, 11 JUN 2026 to 09 JUL 2026

NE-3, 11 JUN 2026 to 09 JUL 2026

EMERG SAFE ALT 100 NM 4100

	ELEV 8	TDZE 8	
	3000 LFI R-073	JRAYE LFI 20	
CATEGORY	C	D	E
S-8 *	480/50	472 (500-1)	
CIRCLING **	700-2 692 (700-2)	740-2 1/4 732 (800-2 1/4)	740-2 1/2 732 (800-2 1/2)
	HIRL Rwy 8-26		

HI-TACAN Z RWY 8