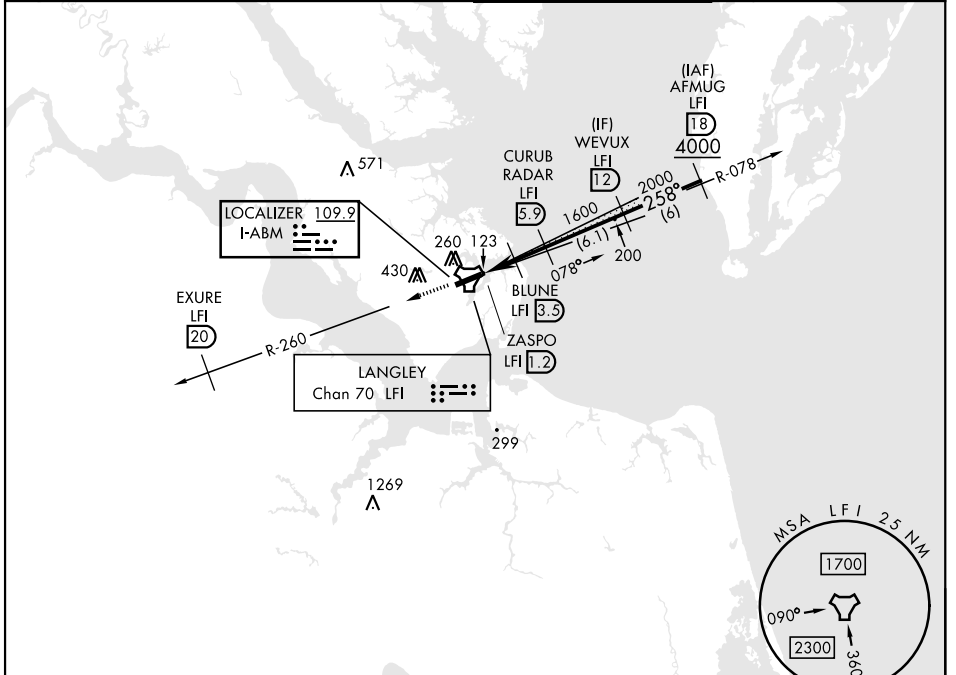


# ILS or LOC Y RWY 26

LOC I-ABM <b>109.9</b>	APCH CRS <b>258°</b>	Rwy Idg <b>10,002</b> TDZE <b>8</b> Arprt Elev <b>8</b>	[USAF]	LANGLEY AFB (KLFJ)
RADAR or DME required			ALSF-1 	MISSED APPROACH: Climb to 3000 on LFI TACAN R-260 to EXURE LFI 20 DME, then as instructed by ATC.
<p>▼ * When ALS inop, increase RVR to 40 and vis to 3/4 miles.                  *** When ALS inop, increase RVR to 55 and vis to 1 mile.                  *** Circling S of Rwy 8-26 not authorized.</p>				
ATIS★ <b>270.1</b>	NORFOLK APP CON <b>124.9</b> (311° - 009°) <b>126.05</b> (010° - 080°) <b>127.9 269.425</b> (180° - 310°)	TOWER★ <b>125.0 253.5</b>	GND CON <b>121.7 275.8</b>	



NE-3, 11 JUN 2026 to 09 JUL 2026

NE-3, 11 JUN 2026 to 09 JUL 2026

EMERG SAFE ALT 100 NM 4100						ELEV 8	TDZE 8	
3000 ↑ LFI R-260	EXURE LFI 20							
CATEGORY	A	B	C	D	E	HIRL Rwy 8-26		
S-ILS 26**	208/24		200	(200-1/2)		FAF to MAP 4.7 NM		
S-LOC 26***	380/24	372 (400-1/2)	380/35	372	(400-5/8)			
CIRCLING ***	520-1	560-1	700-2	740-2 1/4	740-2 1/2			
	512 (600-1)	552 (600-1)	692 (700-2)	732 (800-2 1/4)	732 (800-2 1/2)			

# ILS or LOC Y RWY 26