

HAMPTON, VIRGINIA

# ILS or LOC Y RWY 8

LOC I-LFI <b>109.9</b>	APCH CRS <b>078°</b>	Rwy Ldg <b>10,002</b> TDZE <b>8</b> Arprt Elev <b>8</b>
---------------------------	-------------------------	---

[USAF]

LANGLEY AFB (KLFJ)

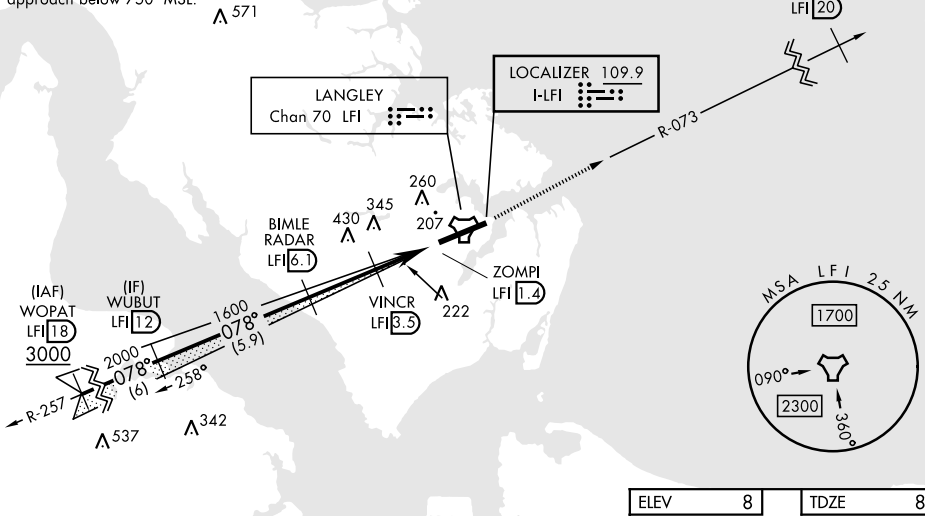
RADAR or DME required		ALSF-1 	MISSED APPROACH: Climb to 3000 on LFI TACAN R-073 to JRAYE LFI 20 DME, then as instructed by ATC.
<p>▼ * When ALS inop, increase RVR to 40 and vis to 3/4 mile.</p> <p>** When ALS inop, increase CAT AB RVR to 55 and vis to 1 mile, CAT CDE vis to 1 3/8 miles.</p>			

ATIS★ <b>270.1</b>	NORFOLK APP CON <b>124.9</b> (311° - 009°) <b>126.05</b> (010° - 080°) <b>127.9</b> 269.425 (180° - 310°)	TOWER★ <b>125.0 253.5</b>	GND CON <b>121.7 275.8</b>
-----------------------	--	------------------------------	-------------------------------

\*\*\* Circling not authorized S of Rwy 8-26.

Expect RADAR vectors to IAF or Final Approach course.

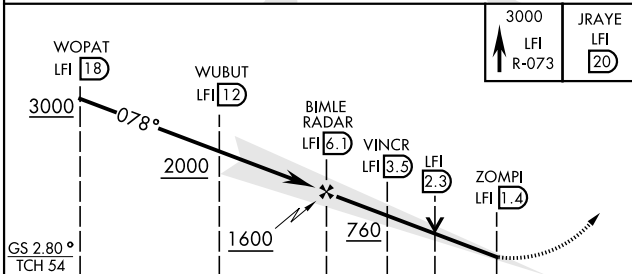
Glideslope unusable for coupled approach below 750' MSL.



NE-3, 11 JUN 2026 to 09 JUL 2026

NE-3, 11 JUN 2026 to 09 JUL 2026

EMERG SAFE ALT 100 NM 4100



CATEGORY	A	B	C	D	E
S-ILS 8 *	208/24		200	(200-1/2)	
S-LOC 8 **	480/24	472 (500-1/2)	480/50	472 (500-1)	
CIRCLING ***	520-1 512 (600-1)	560-1 552 (600-1)	700-2 692 (700-2)	740-2 1/4 732 (800-2 1/4)	740-2 1/2 732 (800-2 1/2)

ELEV	8	TDZE	8
HIRL Rwy 8-26			
FAF to MAP 4.7 NM			
Knots	60	90	120 150 180
Min:Sec	4:42	3:08	2:21 1:53 1:34

HAMPTON, VIRGINIA

37°05'N-76°22'W

LANGLEY AFB (KLFJ)

Amdt 8 17APR25

# ILS or LOC Y RWY 8