

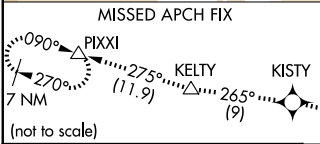
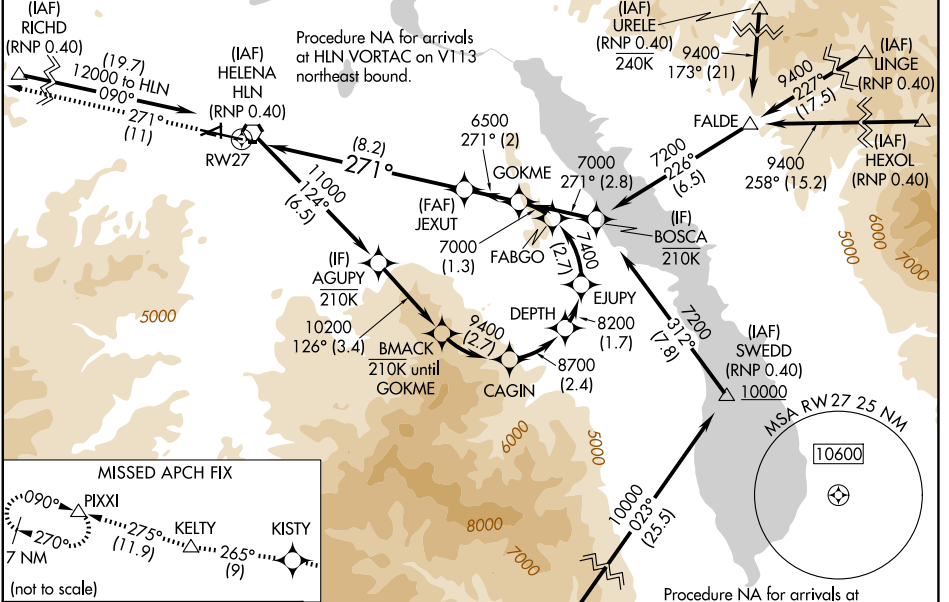
APP CRS <b>271°</b>	Rwy Ldg TDZE Apt Elev	<b>9000</b> <b>3852</b> <b>3877</b>
------------------------	-----------------------------	---

# RNAV (RNP) Z RWY 27

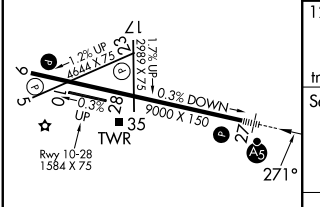
HELENA RGNL (HLN)

RNP AR APCH - GPS.		MISSED APPROACH: Climb to 12000 on the RNAV missed approach route to PIXXI and hold, continue climb-in-hold to 12000. *Missed approach requires minimum climb of 280 feet per NM to 7800. #Missed approach requires minimum climb of 375 feet per NM to 6300.
Inop table does not apply to RNP 0.30 DA. For uncompensated Baro-VNAV systems, procedure NA below -28°C or above 54°C. For inop ALS, increase RNP 0.13 DA* visibility all Cats to 7/8 SM, RNP 0.30 DA* visibility all Cats to 1 3/8 SM.		

ATIS <b>120.4</b>	HELENA APP CON * <b>119.5 229.4</b>	HELENA TOWER * <b>118.3 (CTAF) 257.8</b>	GND CON <b>121.9</b>	UNICOM <b>122.95</b>
----------------------	--	---	-------------------------	-------------------------



ELEV 3877	<b>D</b>	TDZE 3852
-----------	----------	-----------



12000	KISTY	tr 265°	KELTY	tr 275°	PIXXI	JEXUT	GOKME	
tr 271°						6500	7000	
See planview for multiple IF locations.							GP 3.00°	TCH 55
RWY 27			8.2 NM		2 NM			

CATEGORY	A	B	C	D
RNP 0.13 DA*		4172-1/2	320 (300-1/2)	
RNP 0.20 DA#		4303-7/8	451 (500-7/8)	
RNP 0.30 DA#		4353-1	501 (500-1)	
RNP 0.30 DA		4866-4	1014 (1000-4)	

REIL Rws 9, 17, and 35  
MIRL Rws 5-23 and 17-35  
HIRL Rwy 9-27

## AUTHORIZATION REQUIRED

NW-1, 11 JUN 2026 to 09 JUL 2026

NW-1, 11 JUN 2026 to 09 JUL 2026