

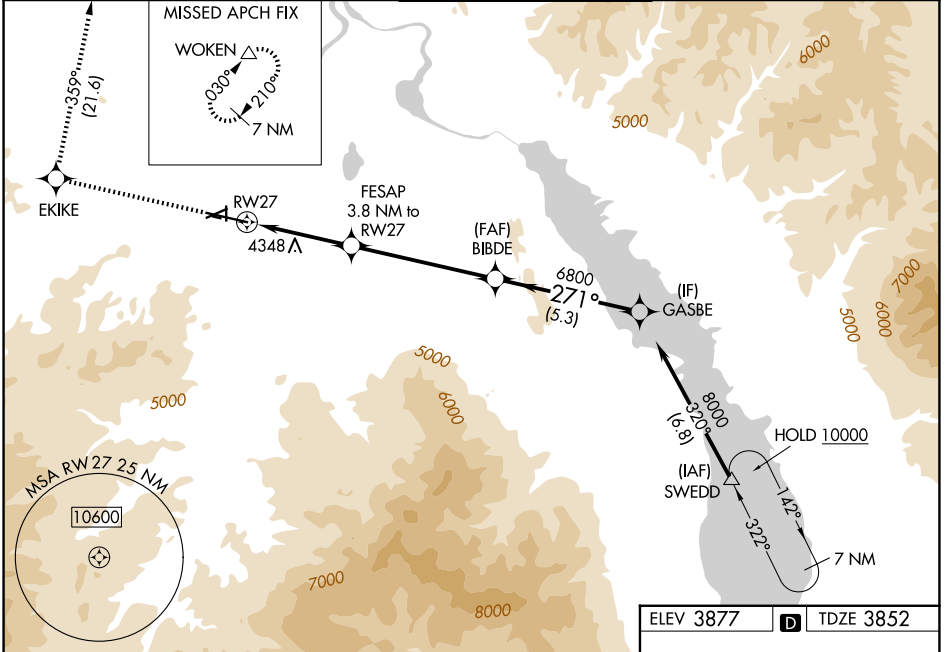
WAAS CH 69405 W27A	APP CRS 271°	Rwy Ldg TDZE Apt Elev 9000 3852 3877
--	------------------------	--

RNAV (GPS) X RWY 27

HELENA RGNL (HLN)

RNP APCH - GPS.	MALSR 	MISSED APPROACH: Climb to 9400 direct EKIKE and on track 359° to WOKEN and hold.
 -16°C		

ATIS 120.4	HELENA APP CON * 119.5 229.4	HELENA TOWER * 118.3 (CTAF) 257.8	GND CON 121.9	UNICOM 122.95
----------------------	--	---	-------------------------	-------------------------



9400 ↑ EKIKE	↑ ir 359° WOKEN				
FESAP 3.8 NM to RW27		BIBDE 6800			
3.1 NM to RW27		5120		GASBE 8000	
3.1 NM		0.8		5.3 NM	
CATEGORY	A	B	C	D	
LPV DA	4501-1 ³ / ₈		649 (700-1 ³ / ₈)		
LNAV/VNAV DA	4724-2		872 (900-2)		
LNAV MDA	4880- ³ / ₄ 1028 (1100- ³ / ₄)	4880-1 1028 (1100-1)	4880-2 ¹ / ₂	1028 (1100-2 ¹ / ₂)	
CIRCLING	4880-1 ¹ / ₄ 1003 (1100-1 ¹ / ₄)	4880-1 ¹ / ₂ 1003 (1100-1 ¹ / ₂)	6000-3	2123 (2200-3)	

ELEV 3877 **D** TDZE 3852

REIL Rwy 9, 17, and 35
MIRL Rwy 5-23 and 17-35
HIRL Rwy 9-27

NW-1, 11 JUN 2026 to 09 JUL 2026

NW-1, 11 JUN 2026 to 09 JUL 2026