

VORTAC HLN 117.7 Chan 124	APP CRS 270°	Rwy Ldg TDZE Apt Elev N/A N/A 3877
---	------------------------	---

VOR-B

HELENA RGNL (HLN)

DME required.

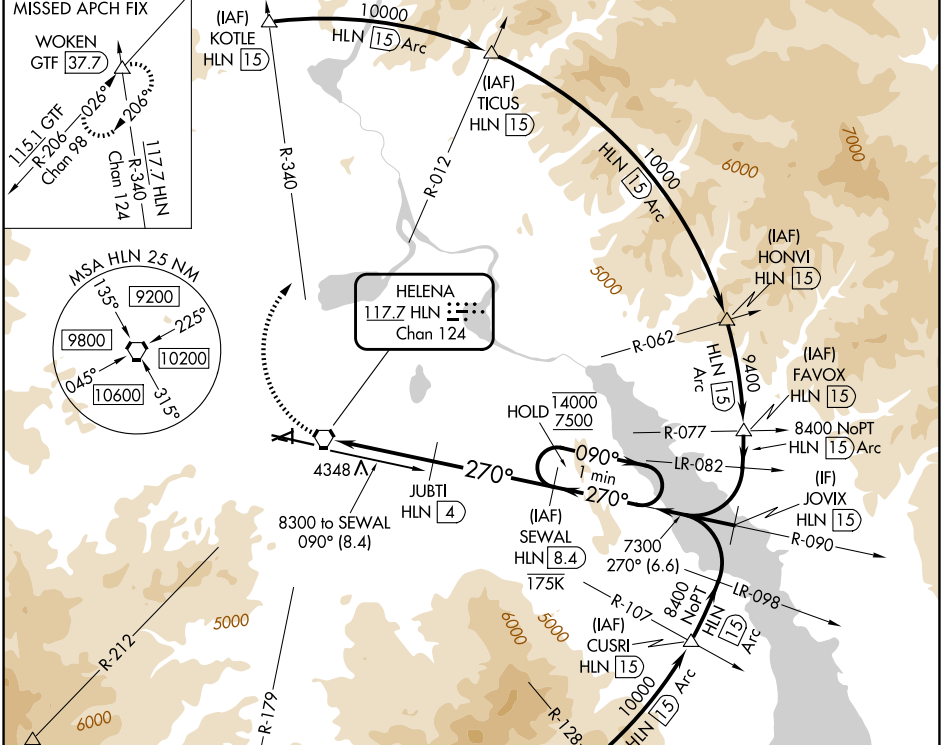
⚠ Circling NA to Rwys 10 and 28. Circling NA for Cat D south of Rwy 9-27. Circling Rwy 5, 23, 35 NA at night. Rwy 5, 23, 35 helicopter visibility reduction below 1 SM NA. DME Arc to final approach course required for turbojet aircraft.

⚠ -16°C

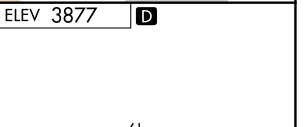
⚠ Holding at SEWAL authorized for Cat A and B aircraft only.

MISSED APPROACH: Climbing right turn to 9000 on HLN VORTAC R-340 to WOKEN INT/GTF 37.7 DME and hold.

ATIS 120.4	HELENA APP CON * 119.5 229.4	HELENA TOWER * 118.3 (CTAF) 257.8	GND CON 121.9	UNICOM 122.95
----------------------	--	---	-------------------------	-------------------------



9000 WOKEN HLN R-340	JUBTI HLN 4	SEWAL HLN 8.4	One Minute Holding Pattern 14000/7500 (090°/270°)
----------------------------	----------------	------------------	--



9000 WOKEN HLN R-340	JUBTI HLN 4	SEWAL HLN 8.4	One Minute Holding Pattern 14000/7500 (090°/270°)
HLN VORTAC	6020	7300	14000/7500
4 NM	4.4 NM		

CATEGORY	A	B	C	D
CIRCLING	4760-1¼ 883 (900-1¼)	4800-1¼ 923 (1000-1¼)	6000-3	2123 (2200-3)

REIL Rwys 9, 17, and 35

MIRL Rwys 5-23 and 17-35

HIRL Rwy 9-27

NW-1, 11 JUN 2026 to 09 JUL 2026

NW-1, 11 JUN 2026 to 09 JUL 2026