

KARR SEVEN DEPARTURE (RNAV)

SC-5, 11 JUN 2026 to 09 JUL 2026

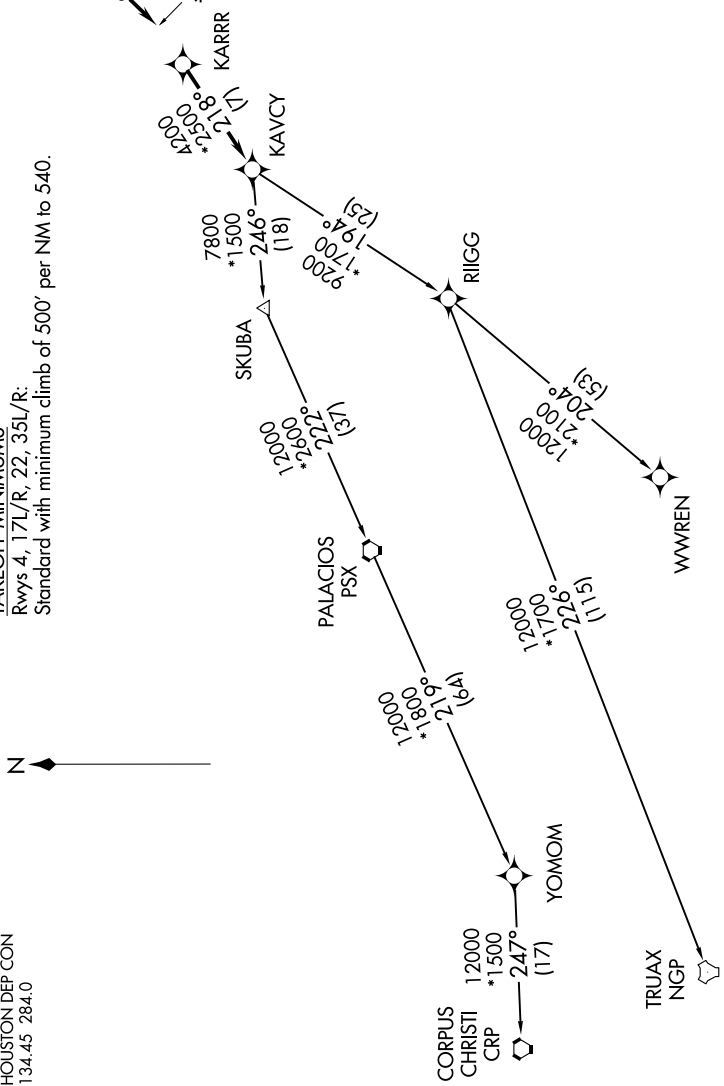
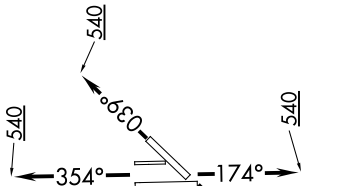
RNAV-1 DME/DME/IRU or GPS.
RADAR required.

ATIS 135.575 269.9
GND CON 121.6 275.8
ELLINGTON TOWER 126.05 253.5
HOUSTON DEP CON 134.45 284.0

TAKEOFF MINIMUMS

Rwys 4, 17L/R, 22, 35L/R:
Standard with minimum climb of 500' per NM to 540.

TOP ALTITUDE: ASSIGNED BY ATC



NOTE: Chart not to scale.

(NARRATIVE ON FOLLOWING PAGE)

SC-5, 11 JUN 2026 to 09 JUL 2026

KARR SEVEN DEPARTURE (RNAV)