

(LFK4.LFK) 25331

AL-197 (FAA)

ELLINGTON (E,F,D)
HOUSTON, TEXAS

LUFKIN FOUR DEPARTURE

HOUSTON DEP CON
134.45 284.0
ATIS
135.575 269.9
GND CON
121.6 275.8
ELLINGTON TOWER
126.05 253.5

**TOP ALTITUDE:
ASSIGNED BY ATC**

LITTLE ROCK
115.1 LIT :::::
Chan 98

RADAR and DME required.

NOTE: For aircraft destined LIT or overflying LIT or PXV.

TAKEOFF MINIMUMS

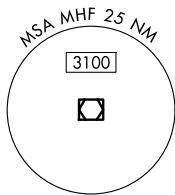
Rwys 4, 17L/R, 35L/R: Standard.
Rwy 22: 300-1¼ or standard with minimum climb of 220'/NM to 300 or alternatively with standard takeoff minimums and a normal 200'/NM climb gradient, takeoff must occur no later than 1500' prior to DER.

LUFKIN
112.1 LFK :::::
Chan 58

HUMBLE
116.6 IAH :::::
Chan 113

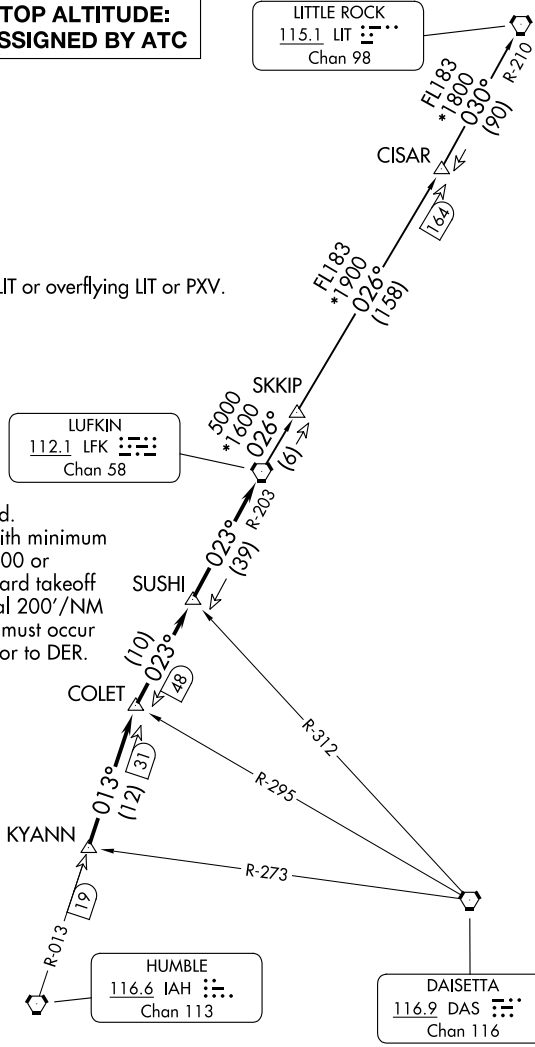
DAISETTA
116.9 DAS :::::
Chan 116

SMITH POINT
114.75 MHF :::::
Chan 94(Y)



NOTE: Chart not to scale.

(CONTINUED ON FOLLOWING PAGE)



SC-5, 11 JUN 2026 to 09 JUL 2026

SC-5, 11 JUN 2026 to 09 JUL 2026

LUFKIN FOUR DEPARTURE

(LFK4.LFK) 27NOV25

HOUSTON, TEXAS
ELLINGTON (E,F,D)