

SNDAY ONE ARRIVAL (RNAV)

9200 JUN 60 120000 JUN 11 '9-C-S

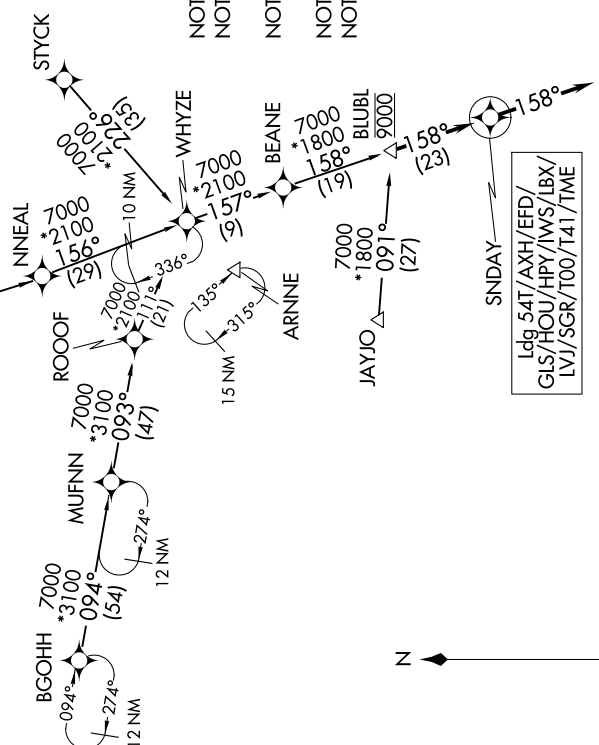
ARRIVAL ROUTE DESCRIPTION

BGOHH TRANSITION (BGOHH.SNDAY1):
 ELLVR TRANSITION (ELLVR.SNDAY1):
 JAYJO TRANSITION (JAYJO.SNDAY1):
 MUFNN TRANSITION (MUFNN.SNDAY1):
 STYCK TRANSITION (STYCK.SNDAY1):

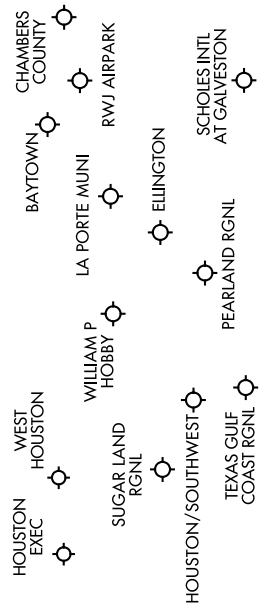
LANDING ALL AIRPORTS: From BLUBL on track 158° to SNDAY, then on track 158°. Expect RADAR vectors to final approach course.

RNAV 1-DME/DME/IRU or GPS.
 RADAR required.

HOUSTON APP CON
 124.225 306.975
 EFD ATIS
 135.575 269.9
 HOU D-ATIS
 124.6
 SGR ATIS
 118.125
 TIME ATIS
 119.525



NOTE: Landing HOU/FFD/GLS/LBX: Turboprop and piston aircraft only.
NOTE: Landing 54T/AXH/HPY/HWS/LVJ/SGR/T00/T41/TME: All aircraft.
NOTE: DME/DME/IRU or GPS equipped jet aircraft landing HOU/FFD/GLS/LBX must file the KIDDZ (RNAV) STAR.
NOTE: JAYJO Transition for Austin terminal area departures only.
NOTE: MUFNN Transition: Do not file - to be assigned by ATC.



SNDAY ONE ARRIVAL (RNAV)

NOTE: Chart not to scale.