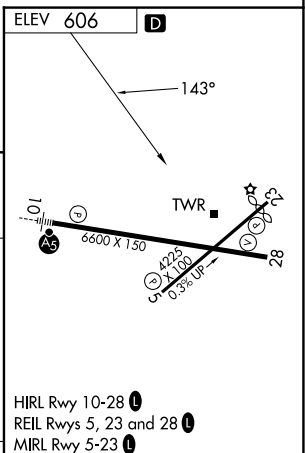
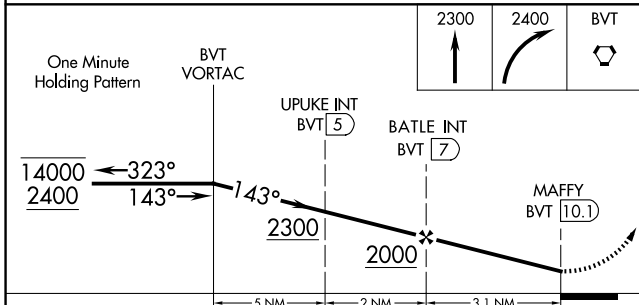
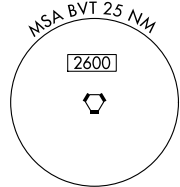
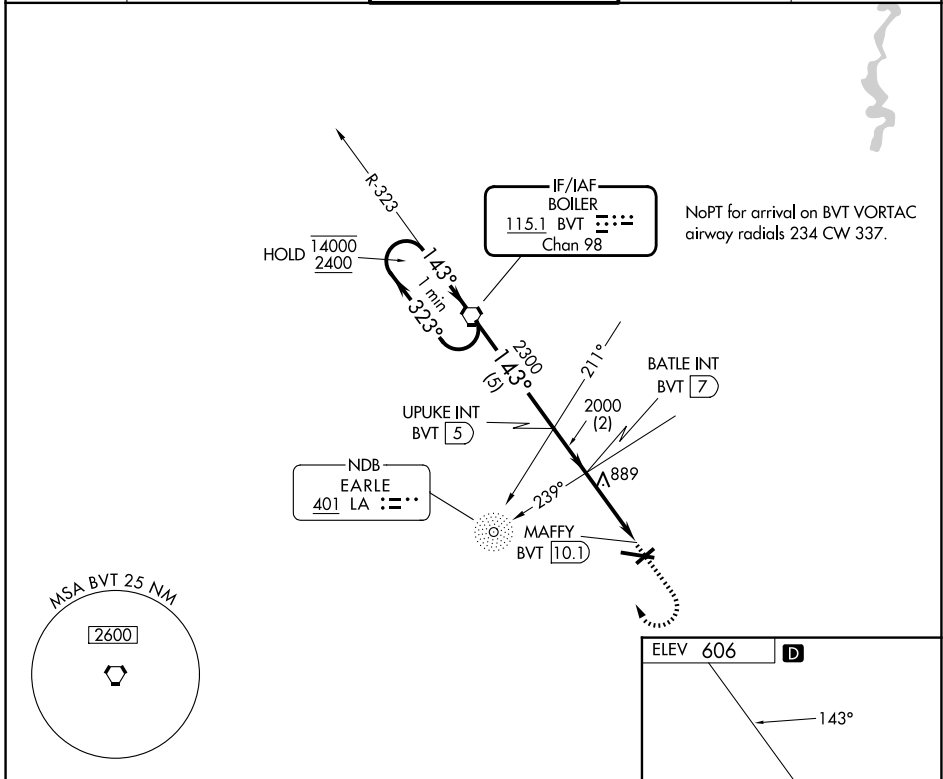


VORTAC BVT 115.1 Chan 98	APP CRS 143°	Rwy Ldg TDZE Apt Elev	N/A N/A 606
--	------------------------	-----------------------------	--

VOR-A
PURDUE UNIVERSITY (LAF)

ADF or DME required.		MISSED APPROACH: Climb to 2300 then climbing right turn to 2400 direct BVT VORTAC and hold.		
<p>∇ Circling Rwy 23 NA at night.</p> <p>⚠ When local altimeter setting not received, use Vermilion Rgnl altimeter setting and increase all MDAs 100 feet and Cat C and D visibility 1/2 SM.</p>				
ATIS 127.75	GRISSOM APP CON ★ 123.85 291.675	LAFAYETTE TOWER ★ 119.6 (CTAF) 0 343.625	GND CON 121.9 343.625	UNICOM 122.95



CATEGORY	A	B	C	D	FAF to MAP 3.1 NM					
CIRCLING	1160-1	554 (600-1)	1320-2	1420-2 ³ / ₄	Knots	60	90	120	150	180
			714 (800-2)	814 (900-2 ³ / ₄)	Min:Sec	3:06	2:04	1:33	1:14	1:02

EC-2, 11 JUN 2026 to 09 JUL 2026

EC-2, 11 JUN 2026 to 09 JUL 2026