

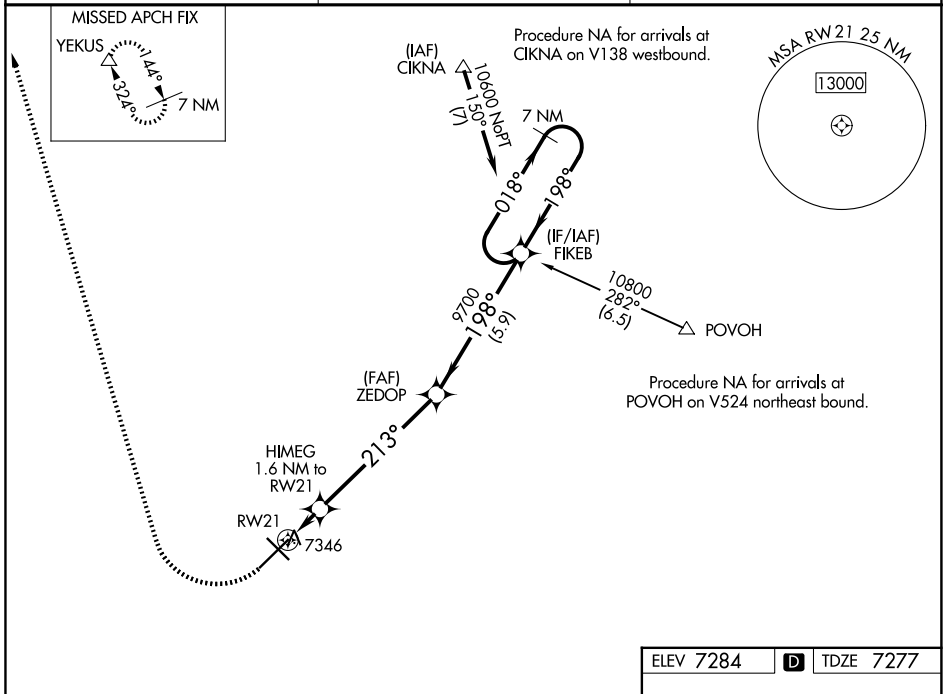
WAAS CH <b>72825</b> <b>W21A</b>	APP CRS <b>213°</b>	Rwy Ldg TDZE Apt Elev	<b>8503</b> <b>7277</b> <b>7284</b>
--	------------------------	-----------------------------	---

# RNAV (GPS) RWY 21

LARAMIE RGNL (L.A.R.)

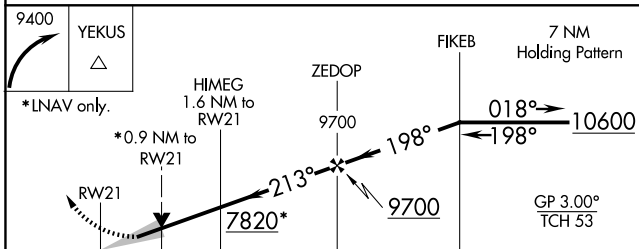
<p><b>⚠</b> Circling to Rwy 30 NA at night. Baro-VNAV NA. DME/DME RNP-0.3 NA.</p>	<p>MISSED APPROACH: Climbing right turn to 9400 direct YEKUS and hold.</p>
---	--

<p>ASOS <b>135.475</b></p>	<p>DENVER CENTER <b>125.9 284.7</b></p>	<p>UNICOM <b>123.05</b> (CTAF) <b>📻</b></p>
--------------------------------	---	---

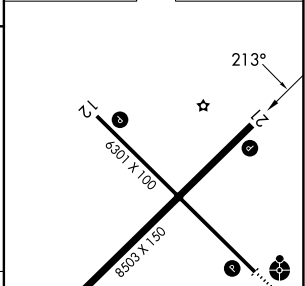


NW-1, 11 JUN 2026 to 09 JUL 2026

NW-1, 11 JUN 2026 to 09 JUL 2026



ELEV 7284	<b>D</b>	TDZE 7277
-----------	----------	-----------



CATEGORY	A	B	C	D
LPV DA		7527- <sup>3</sup> / <sub>4</sub>	250 (300- <sup>3</sup> / <sub>4</sub> )	
LNAV/VNAV DA		7527- <sup>3</sup> / <sub>4</sub>	250 (300- <sup>3</sup> / <sub>4</sub> )	
LNAV MDA		7600-1	323 (400-1)	
CIRCLING	7660-1 376 (400-1)	7760-1 476 (500-1)	7880-1½ 596 (600-1½)	7920-2 636 (700-2)

REIL Rwy 3, 12 and 21 **📻**  
MIRL Rwy 3-21 and 12-30 **📻**