

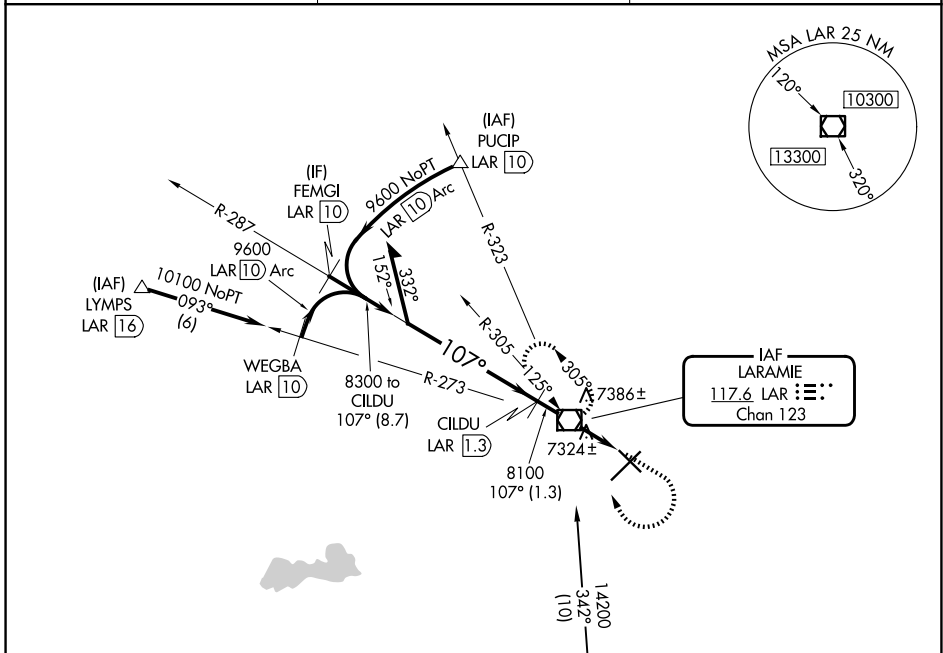
VOR/DME LAR 117.6 Chan 123	APP CRS 107°	Rwy Ldg TDZE 6301 7275 Apt Elev 7284
---	------------------------	---

VOR/DME RWY 12

LARAMIE RGNL (L.A.R.)

MISSED APPROACH: Climb to 7700 then climbing right turn to 9600 direct LAR VOR/DME and hold, continue climb-in-hold to 9600.

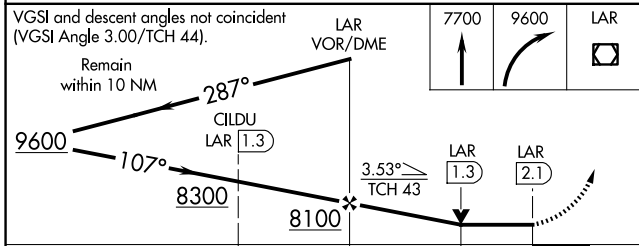
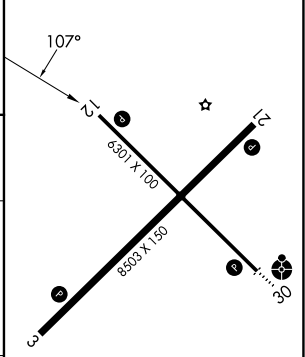
ASOS 135.475	DENVER CENTER 125.9 284.7	UNICOM 123.05 (CTAF) 0
------------------------	-------------------------------------	----------------------------------



NW-1, 11 JUN 2026 to 09 JUL 2026

NW-1, 11 JUN 2026 to 09 JUL 2026

ELEV 7284	D	TDZE 7275
-----------	---	-----------



CATEGORY	A	B	C	D
S-12	7580-1 305 (300-1)			
CIRCLING	7660-1 376 (400-1)	7760-1 476 (500-1)	7880-1½ 596 (600-1½)	7920-2 636 (700-2)

REIL Rwy 3, 12 and 21 0
MIRL Rwy 3-21 and 12-30 0