

FORT SILL, OKLAHOMA

# RNAV (GPS) RWY 18

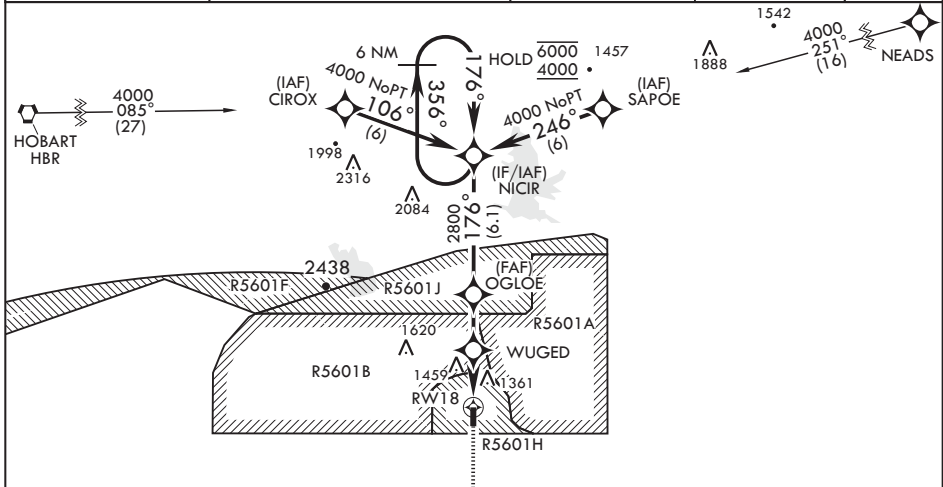
APCH CRS <b>176°</b>	Rwy Idg <b>5002</b>
	TDZE <b>1188</b>
	Arpt Elev <b>1188</b>

-(USA)

HENRY POST AAF (KFSI)

RNP APCH	MISSED APPROACH: Climb to 3500 direct to FESAD and hold.
----------	--

ATIS <b>135.425 354.025</b>	FORT SILL APP CON/DEP CON <b>120.55 322.4</b>	CLNC DEL <b>121.7 279.575</b>	CTAF <b>124.95 0*</b>	ASR
--------------------------------	--	----------------------------------	--------------------------	-----

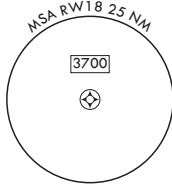
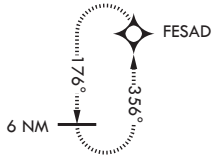


Procedure NA for arrivals at NEADS on V77 Northbound.

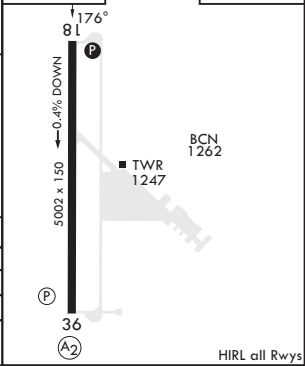
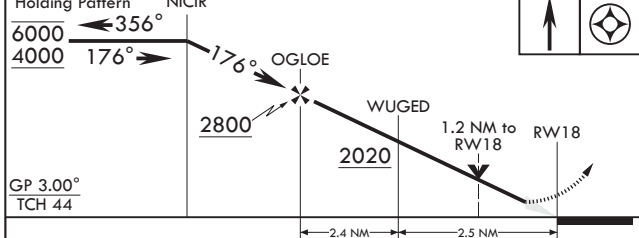
When local altimeter setting not received, use Lawton-Fort Sill RGNL altimeter setting.

For uncompensated Baro-VNAV systems, Procedure NA below -17°C or above 54°C.

Procedure NA for arrival on HBR VORTAC Airway Radials 354 CW 175.



6 NM Holding Pattern NICIR	3500 FESAD	ELEV 1188	TDZE 1188
----------------------------	------------	-----------	-----------



CATEGORY	A	B	C	D
LNAV/VNAV DA	1673-1 $\frac{3}{8}$		485	(500-1 $\frac{3}{8}$ )
LNAV MDA	1600-1	412 (500-1)	1600-1 $\frac{1}{8}$	412 (500-1 $\frac{1}{8}$ )
CIRCLING	1680-1 492 (500-1)	1760-1 572 (600-1)	1820-1 $\frac{1}{4}$ 632 (700-1 $\frac{1}{4}$ )	1920-2 $\frac{1}{4}$ 732 (800-2 $\frac{1}{4}$ )

FORT SILL, OKLAHOMA  
Amdt 2 10AUG23

34°39'N - 98°24'W

HENRY POST AAF (KFSI)

# RNAV (GPS) RWY 18

SC-1, 11 JUN 2026 to 09 JUL 2026

SC-1, 11 JUN 2026 to 09 JUL 2026