

FORT SILL, OKLAHOMA

VOR RWY 36

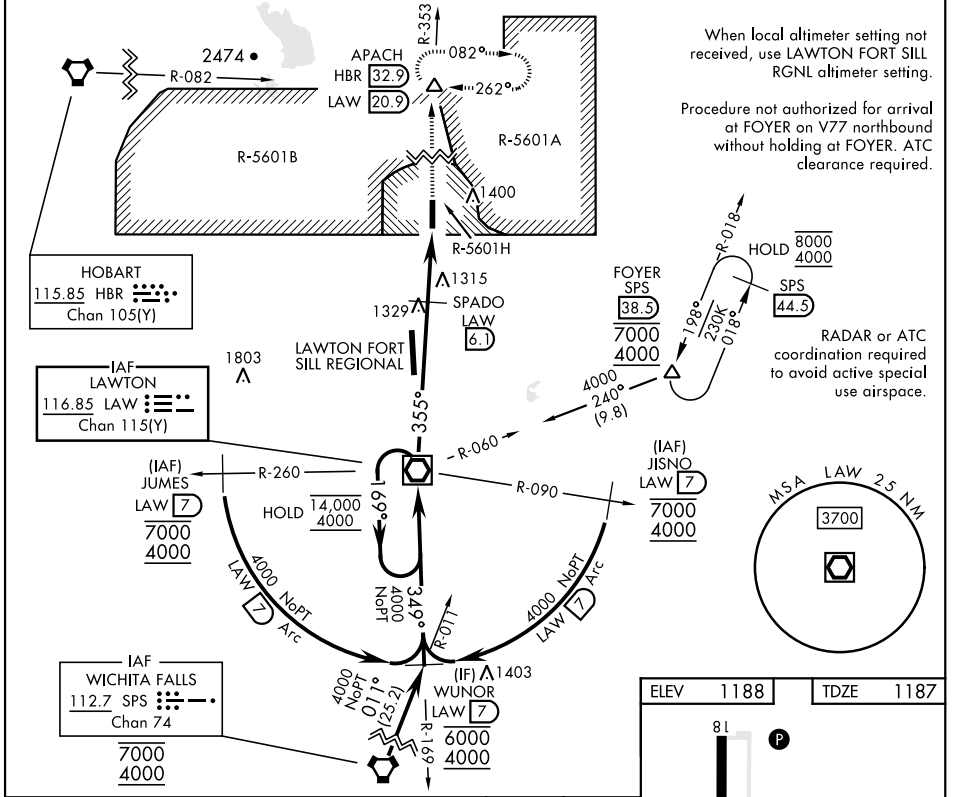
VOR/DME LAW 116.85 Chan 115(Y)	APCH CRS 355°	Rwy Idg TDZE 1187 Arprt Elev 1188
--	-------------------------	---

[USA]

HENRY POST AAF (KFSI)

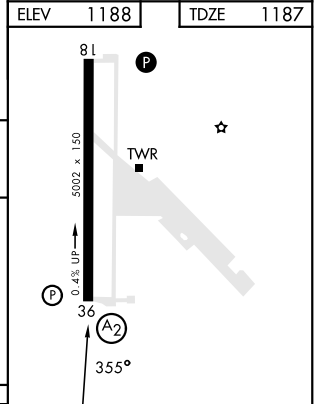
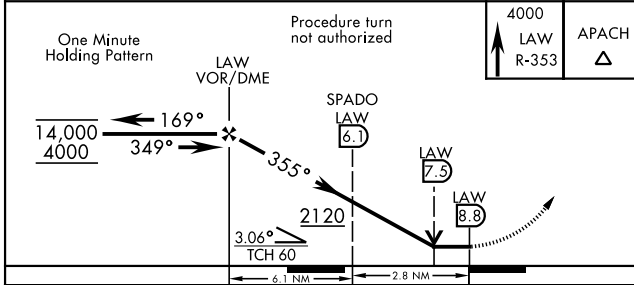
DME, RADAR required.	SALS (A2)	MISSED APPROACH: Climb to 4000 on LAW VOR/DME R-353 to APACH INT/LAW 20.9 DME and hold.
----------------------	---------------------	---

ATIS 135.425 354.025	FORT SILL APP/DEP CON 120.55 322.4	CTAF 124.950	CLNC DEL 121.7 279.575	ASR
--------------------------------	--	------------------------	----------------------------------	-----



SC-1, 11 JUN 2026 to 09 JUL 2026

SC-1, 11 JUN 2026 to 09 JUL 2026



CATEGORY	A	B	C	D
S-36 *	1640/40	453 (500-¾)	1640/55	453 (500-1)
CIRCLING	1680-1	1760-1	1820-1 ¾	1920-2 ¼
	492 (500-1)	572 (600-1)	632 (700-1 ¾)	732 (800-2 ¼)

FAF to MAP 8.8 NM					
Knots	60	90	120	150	180
Min:Sec	8:48	5:52	4:24	3:31	2:56

FORT SILL, OKLAHOMA
Amdt 16 31OCT24

34° 39' N-98° 24' W

HENRY POST AAF (KFSI)

VOR RWY 36