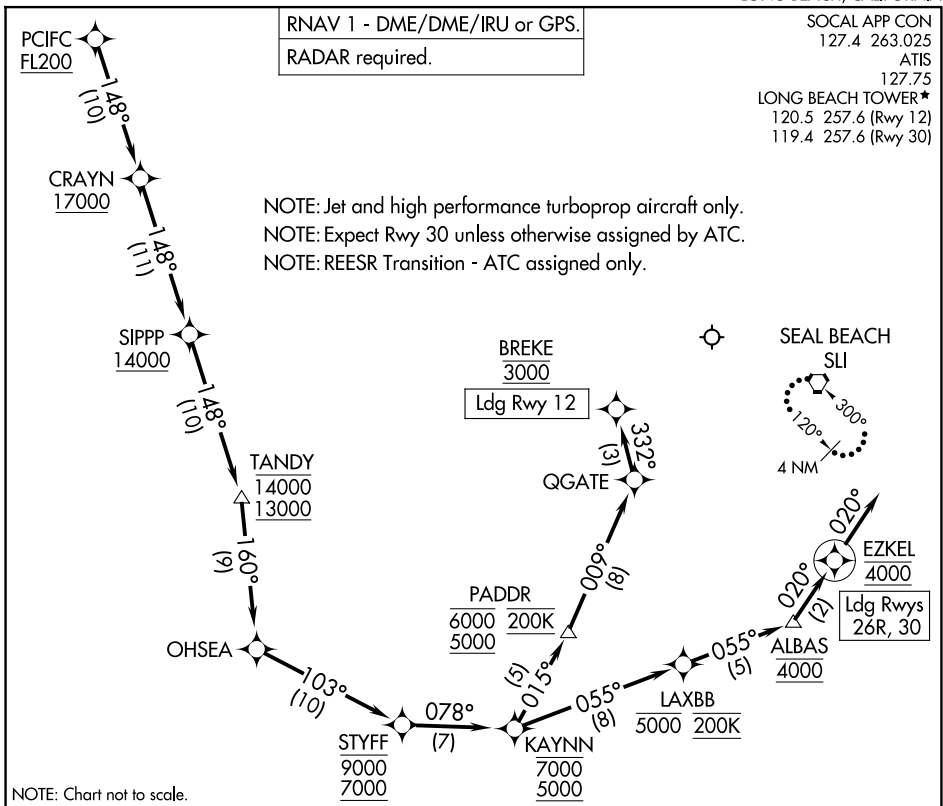


# PCIFC THREE ARRIVAL (RNAV) Arrival Routes



NOTE: Chart not to scale.

## ARRIVAL ROUTE DESCRIPTION

From PCIFC on track 148° to cross CRAYN at or above 17000, then on track 148° to cross SIPPP at or above 14000, then on track 148° to cross TANDY between 13000 and 14000, then on track 160° to OHSEA, then on track 103° to cross STYFF between 7000 and 9000.

LANDING RUNWAY 12: From STYFF on track 078° to cross KAYNN between 5000 and 7000, then on track 015° to cross PADDR between 5000 and 6000 and at 200K, then on track 009° to QGATE, then on track 332° to cross BREKE at 3000. Expect RNAV (RNP) RWY 12 approach.

LANDING RUNWAYS 26R, 30: From STYFF on track 078° to cross KAYNN between 5000 and 7000, then on track 055° to cross LAXBB at or below 5000 and at 200K, then on track 055° to cross ALBAS at 4000, then on track 020° to cross EZKEL at 4000, then on track 020°. Expect RNAV (RNP) Y RWY 30 or RADAR vectors to final approach course.

### LOST COMMUNICATIONS

LANDING RUNWAY 12: After BREKE proceed on the RNAV (RNP) RWY 12 approach.

LANDING RUNWAYS 26R, 30: After EZKEL proceed on the RNAV (RNP) Y RWY 30 or ILS or LOC RWY 30 approach.

If unable approach to LGB, after EZKEL/BREKE climb to 4000 direct SLI VORTAC and hold.