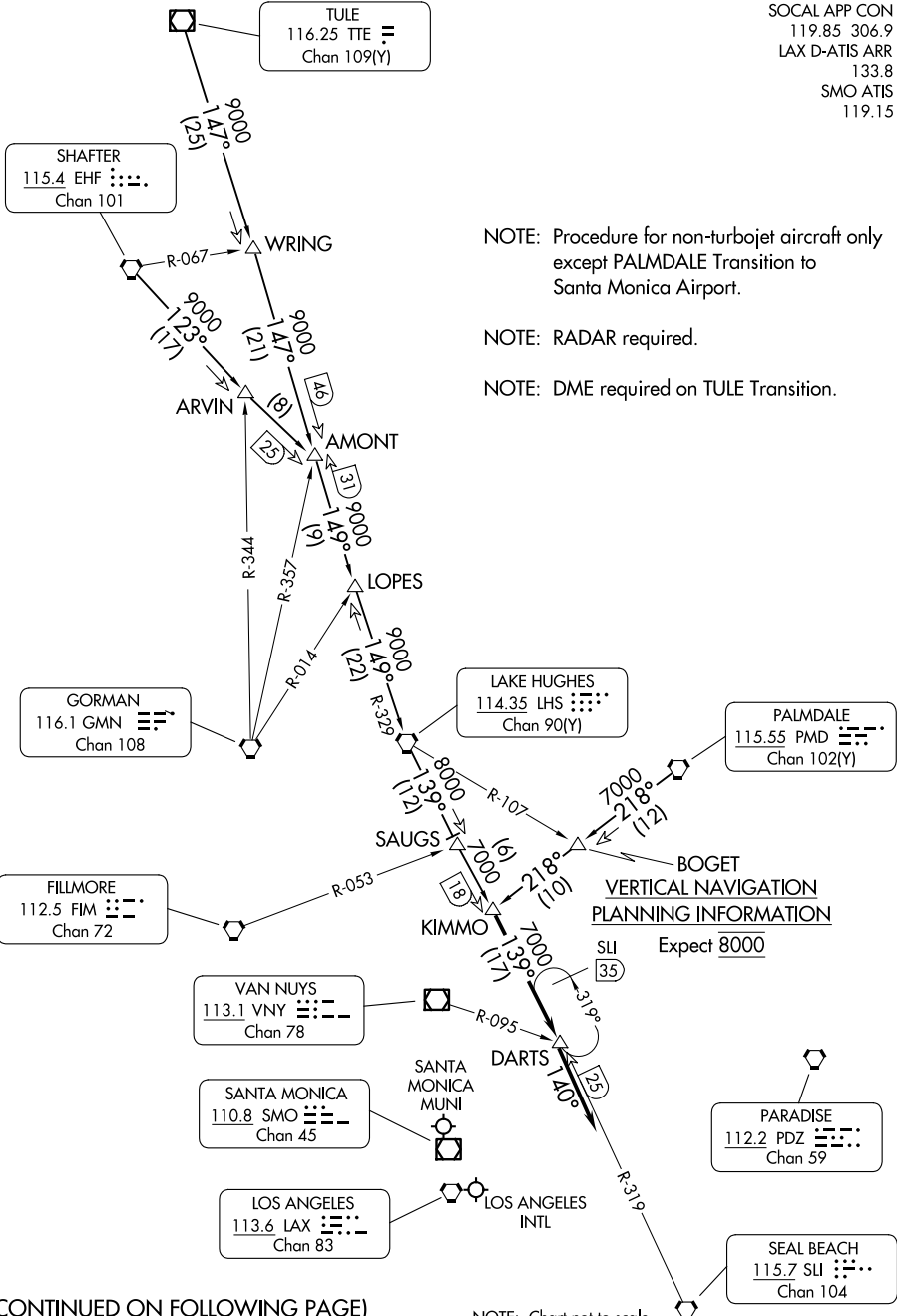


KIMMO THREE ARRIVAL

AL-237 (FAA)

LOS ANGELES, CALIFORNIA

SOCAL APP CON
 119.85 306.9
 LAX D-ATIS ARR
 133.8
 SMO ATIS
 119.15



NOTE: Procedure for non-turbojet aircraft only except PALMDALE Transition to Santa Monica Airport.

NOTE: RADAR required.

NOTE: DME required on TULE Transition.

(CONTINUED ON FOLLOWING PAGE)

NOTE: Chart not to scale.

KIMMO THREE ARRIVAL

LOS ANGELES, CALIFORNIA

SW-3, 11 JUN 2026 to 09 JUL 2026

SW-3, 11 JUN 2026 to 09 JUL 2026