

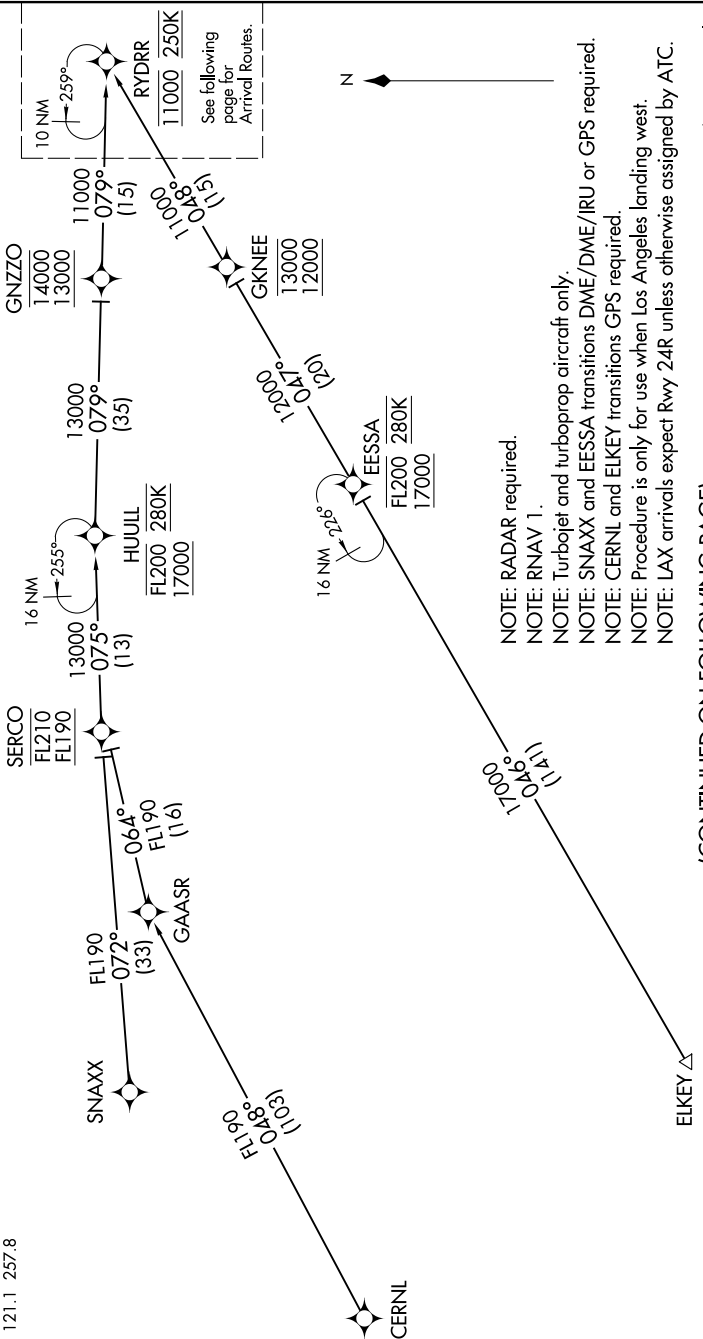
RYDRR TWO ARRIVAL (RNAV) Transition Routes

LOS ANGELES, CALIFORNIA

SW-3, 11 JUN 2026 to 09 JUL 2026

SOCAL APP CON
 124.5 235.975
 LAX D-ATIS ARR
 133.8
 HHR ATIS
 118.4
 LOS ANGELES TOWER
 (N) 133.9, 239.3
 (S) 120.95, 379.1
 HAWTHORNE TOWER ★
 121.1 257.8

CERNL TRANSITION (CERNL.RYDRR2)
EESSA TRANSITION (EESSA.RYDRR2)
EIKEY TRANSITION (EIKEY.RYDRR2)
SNAXX TRANSITION (SNAXX.RYDRR2)



NOTE: RADAR required.
 NOTE: RNAV 1.
 NOTE: Turbojet and turboprop aircraft only.
 NOTE: SNAXX and EESSA transitions DME/DME/IRU or GPS required.
 NOTE: CERNL and EIKEY transitions GPS required.
 NOTE: Procedure is only for use when Los Angeles landing west.
 NOTE: LAX arrivals expect Rwy 24R unless otherwise assigned by ATC.

(CONTINUED ON FOLLOWING PAGE)

NOTE: Chart not to scale.

RYDRR TWO ARRIVAL (RNAV) Transition Routes

LOS ANGELES, CALIFORNIA

SW-3, 11 JUN 2026 to 09 JUL 2026