

# GTGON ONE DEPARTURE (RNAV)

LOUISVILLE, KENTUCKY

SE-1, 11 JUN 2026 to 09 JUL 2026

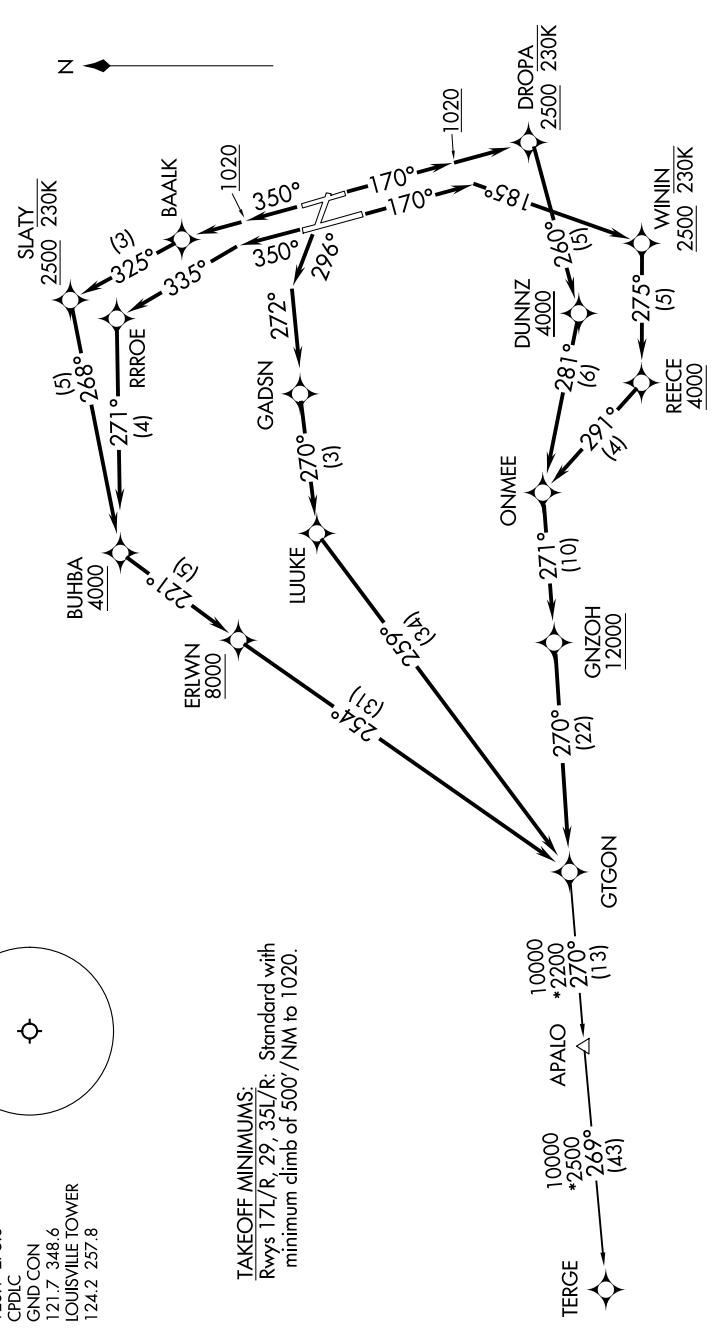
**TOP ALTITUDE:  
13000**

RNAV 1 - DME/DME/IRU or GPS.  
RADAR required for non-GPS equipped aircraft.

LOUISVILLE DEP CON  
132.075 327.0  
D-ATIS 118.725  
CINC DEL  
126.1 275.8  
CPDLC  
GND CON  
121.7 348.6  
LOUISVILLE TOWER  
124.2 257.8

N 360 SDF 2.5 NM

**TAKEOFF MINIMUMS:**  
Rwys 17L/R, 29, 35L/R: Standard with minimum climb of 500'/NM to 1020.



NOTE: Chart not to scale.

(CONTINUED ON FOLLOWING PAGE)

SE-1, 11 JUN 2026 to 09 JUL 2026

# GTGON ONE DEPARTURE (RNAV)

LOUISVILLE, KENTUCKY