

LOC/DME I-SNU <b>110.3</b> Chan <b>40</b>	APP CRS <b>170°</b>	Rwy Ldg <b>10000</b> TDZE <b>485</b> Apt Elev <b>501</b>
---	------------------------	--

# ILS or LOC RWY 17R

LOUISVILLE MUHAMMAD ALI INTL (SDF)

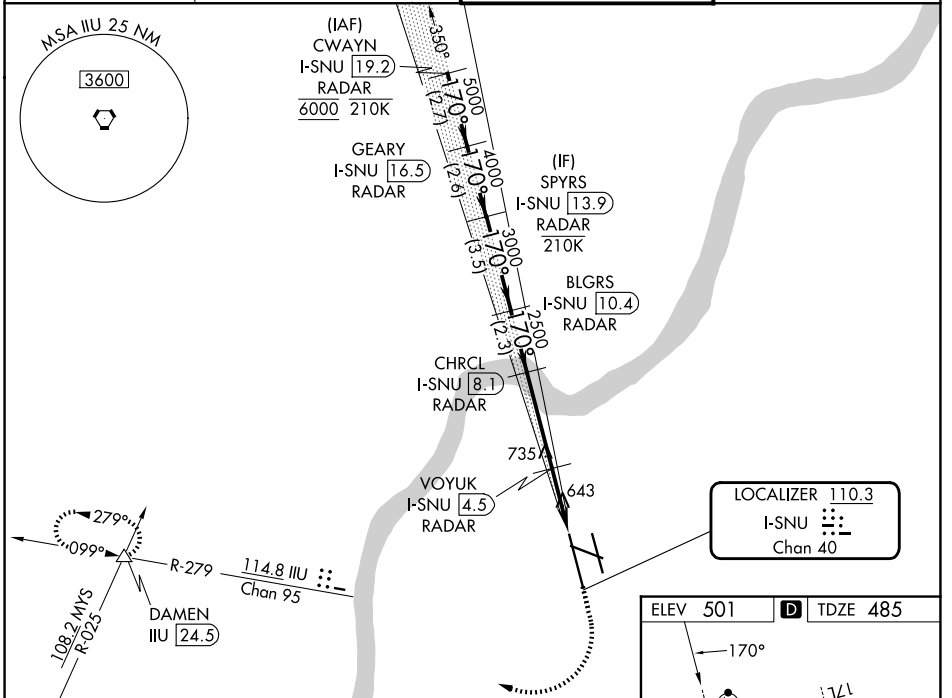
RADAR required for procedure entry at CWAYN.  
DME or RADAR required.

Simultaneous approach authorized. Circling Rwy 11 NA at night.  
For Inop ALS, increase S-LOC 17R Cat C/D visibility to RVR 6000.

MALSRL  
AS

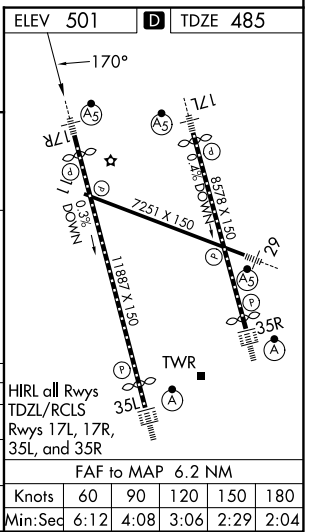
MISSED APPROACH: Climb to 1600 then climbing right turn to 4000 on heading 275° and on IIL VORTAC R-279 to DAMEN INT/24.5 DME and hold.

D-ATIS <b>118.725</b>	LOUISVILLE APP CON <b>132.075 327.0</b>	LOUISVILLE TOWER <b>124.2 257.8</b>	GND CON <b>121.7 348.6</b>
--------------------------	--	--	-------------------------------



VGSI and ILS glidepath not coincident (VGSI Angle 3.00/TCH 64).

SPYRS I-SNU 13.9 RADAR	BLGRS I-SNU 10.4 RADAR	CHRCL I-SNU 8.1 RADAR	VOYUK I-SNU 4.5 RADAR	I-SNU 3	I-SNU 1.9
4000	3000	2500	1300	1600	4000
3.5 NM	2.3 NM	3.6 NM	1.6 NM	1.1	
GS 3.00° TCH 50				hdg 275°	
CATEGORY A	B	C	D		
S-ILS 17R	685/18	200 (200-1/2)			
S-LOC 17R	900/24	415 (400-1/2)	900/40	415 (400-3/4)	
CIRCLING	1040-1 539 (600-1)	1140-1 639 (700-1)	1160-1 3/4 659 (700-1 3/4)	1400-3 899 (900-3)	



SE-1, 11 JUN 2026 to 09 JUL 2026

SE-1, 11 JUN 2026 to 09 JUL 2026