

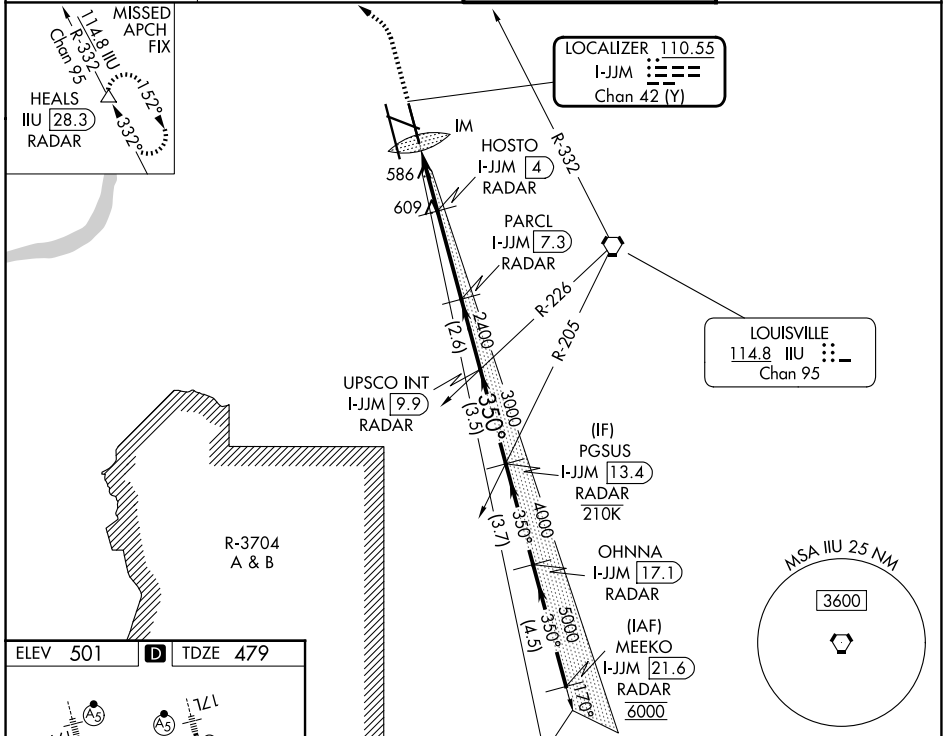
LOC/DME I-JJM 110.55 Chan 42 (Y)	APP CRS 350°	Rwy Ldg 7800 TDZE 479 Apt Elev 501
---	------------------------	--

ILS or LOC RWY 35R

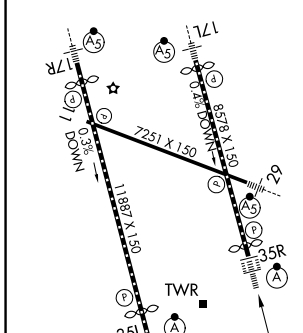
LOUISVILLE MUHAMMAD ALI INTL (SDF)

DME or RADAR required for LOC only.	ALSF-2	MISSED APPROACH: Climb to 2500 then climbing left turn to 4000 on heading 350° and on IIL VORTAC R-332 to HEALS/28.3 DME/RADAR and hold.
Simultaneous approach authorized. Circling Rwy 11 NA at night. For inop ALS, increase LOC Cat C/D to 5000 RVR.		

D-ATIS 118.725	LOUISVILLE APP CON 132.075 327.0	LOUISVILLE TOWER 124.2 257.8	GND CON 121.7 348.6
--------------------------	--	--	-------------------------------



ELEV 501	D	TDZE 479
----------	----------	----------



TDZL/RCLS Rwys 17L, 17R, 35L and 35R HIRL all Rwys

FAF to MAP 5.9 NM					
Knots	60	90	120	150	180
Min:Sec	5:54	3:56	2:57	2:22	1:58

2500	4000	hdg 350°	IIL R-332	HEALS	VGSI and ILS glidepath not coincident (VGSI Angle 3.00/TCH 71).	PGSUS
CATEGORY		A	B	C	D	
S-ILS 35R		679/18				200 (200-½)
S-LOC 35R		840/24	361 (400-½)	840/35	361 (400-¾)	
CIRCLING		1040-1 539 (600-1)	1140-1 639 (700-1)	1160-1¾ 659 (700-1¾)	1400-3 899 (900-3)	

SE-1, 11 JUN 2026 to 09 JUL 2026

SE-1, 11 JUN 2026 to 09 JUL 2026