

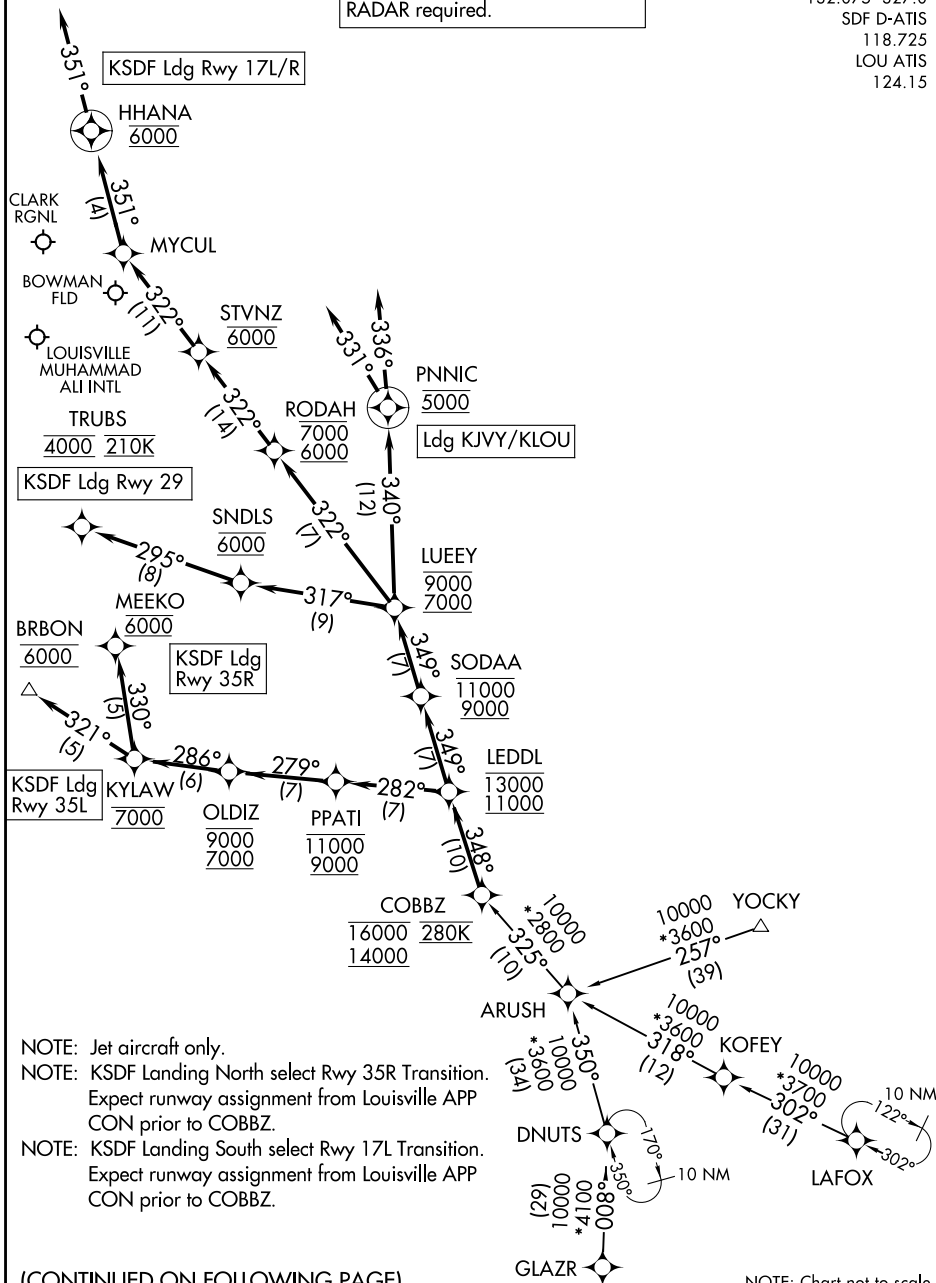
# LEDDL ONE ARRIVAL (RNAV)

LOUISVILLE, KENTUCKY

RNAV 1 - DME/DME/IRU or GPS.

RADAR required.

LOUISVILLE APP CON  
 132.075 327.0  
 SDF D-ATIS  
 118.725  
 LOU ATIS  
 124.15



NOTE: Jet aircraft only.  
 NOTE: KDFW Landing North select Rwy 35R Transition. Expect runway assignment from Louisville APP CON prior to COBBZ.  
 NOTE: KDFW Landing South select Rwy 17L Transition. Expect runway assignment from Louisville APP CON prior to COBBZ.

(CONTINUED ON FOLLOWING PAGE)

NOTE: Chart not to scale.

# LEDDL ONE ARRIVAL (RNAV)

LOUISVILLE, KENTUCKY

SE-1, 11 JUN 2026 to 09 JUL 2026

SE-1, 11 JUN 2026 to 09 JUL 2026