

# RNAV (RNP) Z RWY 29

LOUISVILLE MUHAMMAD ALI INTL (SDF)

APP CRS	Rwy Ldg	<b>7250</b>
<b>296°</b>	TDZE	<b>480</b>
	Apt Elev	<b>501</b>

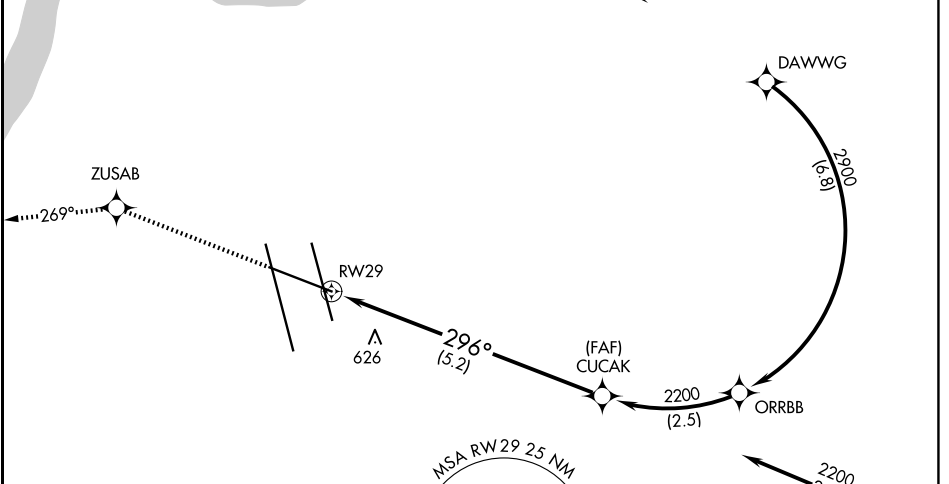
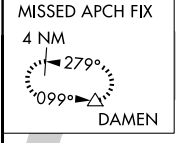
RNP AR APCH - GPS.

▼ For uncompensated Baro-VNAV systems, procedure NA below -13°C or above 54°C.

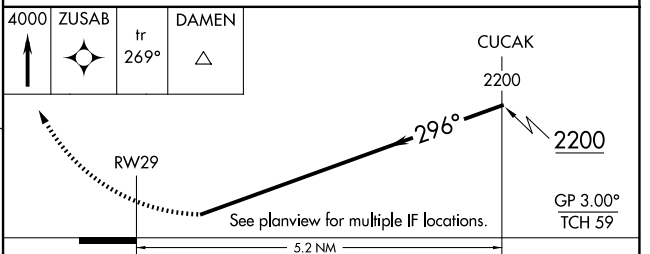
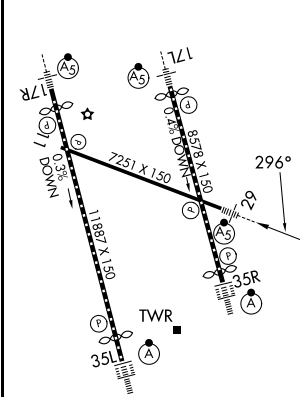
MALS

MISSED APPROACH: Climb to 4000 direct ZUSAB and on track 269° to DAMEN and hold.

D-ATIS <b>118.725</b>	LOUISVILLE APP CON <b>132.075 327.0</b>	LOUISVILLE TOWER <b>124.2 257.8</b>	GND CON <b>121.7 348.6</b>
--------------------------	--	--	-------------------------------



ELEV	501	<b>D</b>	TDZE	480
------	-----	----------	------	-----



CATEGORY	A	B	C	D
RNP 0.30 DA	908/40 428 (500-¾)			

## AUTHORIZATION REQUIRED

SE-1, 11 JUN 2026 to 09 JUL 2026

SE-1, 11 JUN 2026 to 09 JUL 2026