

RNAV (RNP) Z RWY 35R

LOUISVILLE MUHAMMAD ALI INTL (SDF)

APP CRS	Rwy Ldg	7800
350°	TDZE	479
	Apt Elev	501

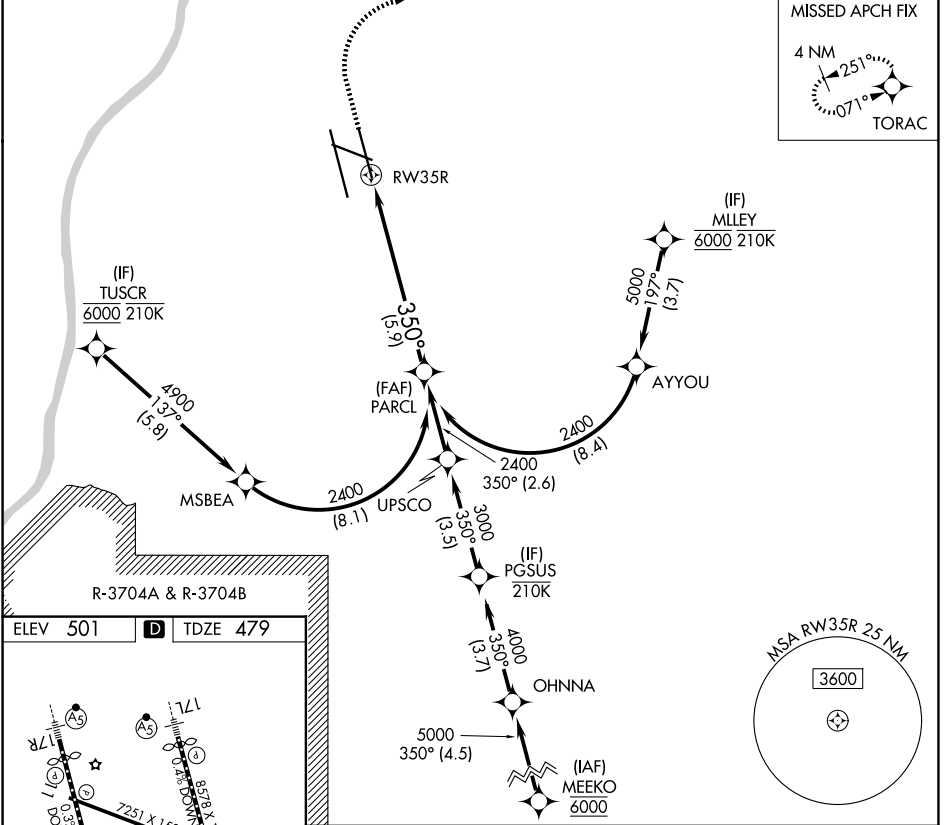
RNP AR APCH - GPS.

▼ For uncompensated Baro-VNAV systems, procedure NA below -13°C or above 54°C. For inop ALS, increase RNP 0.12 all Cats visibility to RVR 4500. Simultaneous approach authorized.

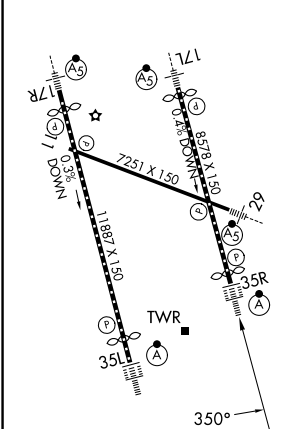
ALSF-2

MISSED APPROACH: Climb to 1600 then climbing right turn to 4000 direct TORAC and hold.

D-ATIS 118.725	LOUISVILLE APP CON 132.075 327.0	LOUISVILLE TOWER 124.2 257.8	GND CON 121.7 348.6
--------------------------	--	--	-------------------------------



ELEV 501	D	TDZE 479
----------	----------	----------



HIRL all Rwy
TDZL/RCLS Rwy 17L,
17R, 35L and 35R

1600 4000 TORAC

VGSI and RNAV glidepath not coincident (VGSI Angle 3.00/TCH 71). See planview for multiple IF locations.

PARCL 2400

RWY 35R 350°

5.9 NM

GP 3.00° TCH 60

CATEGORY	A	B	C	D
RNP 0.12 DA		792/24	313 (300-1/2)	
RNP 0.30 DA		892/40	413 (400-3/4)	

AUTHORIZATION REQUIRED

SE-1, 11 JUN 2026 to 09 JUL 2026

SE-1, 11 JUN 2026 to 09 JUL 2026