

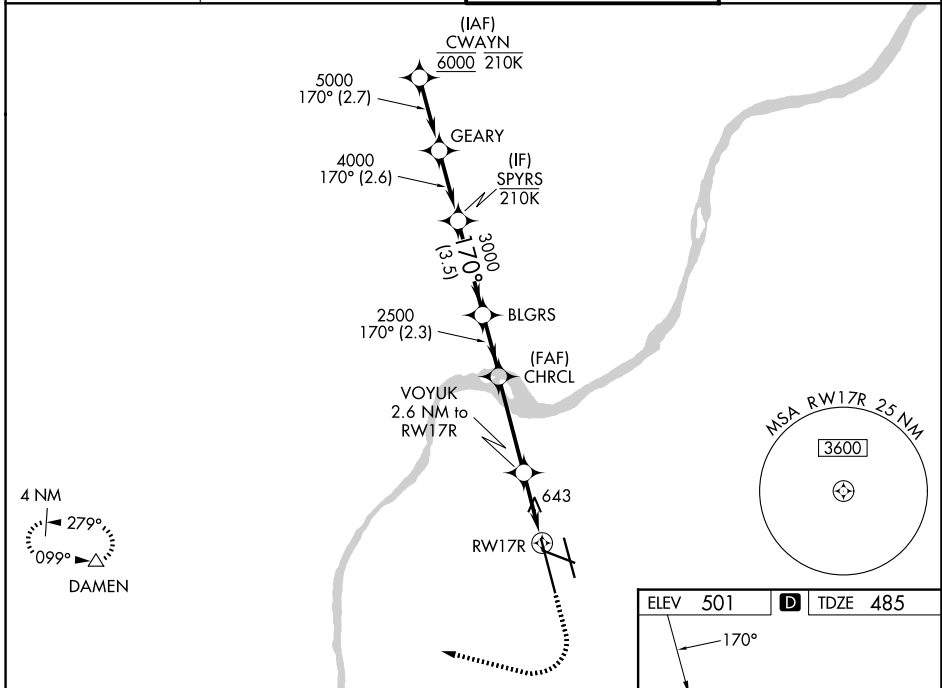
WAAS CH 57909 W17A	APP CRS 170°	Rwy Ldg 10000 TDZE 485 Apt Elev 501
--	------------------------	--

RNAV (GPS) Y RWY 17R

LOUISVILLE MUHAMMAD ALI INTL (SDF)

RNP APCH - GPS.	MALSR 	MISSED APPROACH: Climb to 1600 then climbing right turn to 4000 direct DAMEN and hold.
<p>⚠ Simultaneous approach authorized. LNAV procedure NA during simultaneous operations. Use of FD or AP required during simultaneous operations. Circling Rwy 11 NA at night. For uncompensated Baro-VNAV systems, LNAV/VNAV NA below -13°C or above 34°C. For inop ALS, increase LNAV/VNAV all Cats and LNAV Cats C/D visibility to RVR 6000.</p>		

D-ATIS 118.725	LOUISVILLE APP CON 132.075 327.0	LOUISVILLE TOWER 124.2 257.8	GND CON 121.7 348.6
--------------------------	--	--	-------------------------------

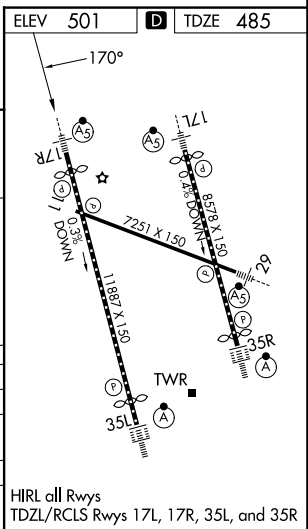


VGSI and RNAV glidepath not coincident (VGSI Angle 3.00/ TCH 64).

SPYRS	BLGRS	CHRCL	VOYUK	RW17R
4000	3000	2500	1300	
GP 3.00° TCH 50				
3.5 NM	2.3 NM	3.6 NM	1.6 NM	1.1 NM
			2.6 NM to RW17R	1.1 NM to RW17R

ELEV	501	TDZE	485
1600	4000	DAMEN	

CATEGORY	A	B	C	D
LPV DA		685/18	200 (200-½)	
LNAV/VNAV DA		900/40	415 (400-¾)	
LNAV MDA	900/24	415 (400-½)	900/40	415 (400-¾)
CIRCLING	1040-1 539 (600-1)	1140-1 639 (700-1)	1160-1¾ 659 (700-1¾)	1400-3 899 (900-3)



SE-1, 11 JUN 2026 to 09 JUL 2026

SE-1, 11 JUN 2026 to 09 JUL 2026