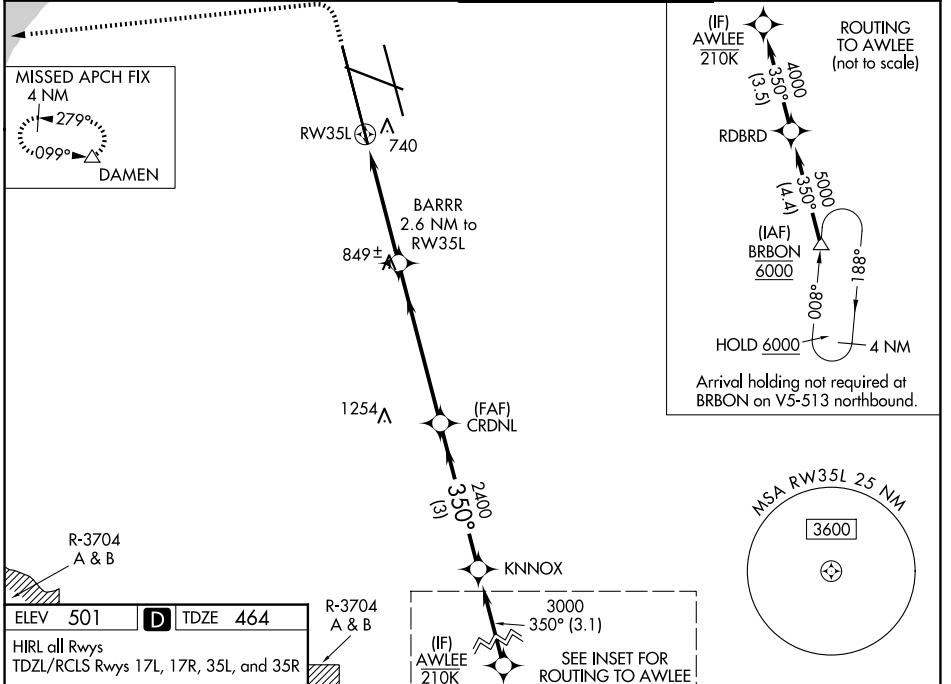


WAAS CH <b>86203</b> <b>W35A</b>	APP CRS <b>350°</b>	Rwy Ldg <b>10000</b> TDZE <b>464</b> Apt Elev <b>501</b>
--	------------------------	--

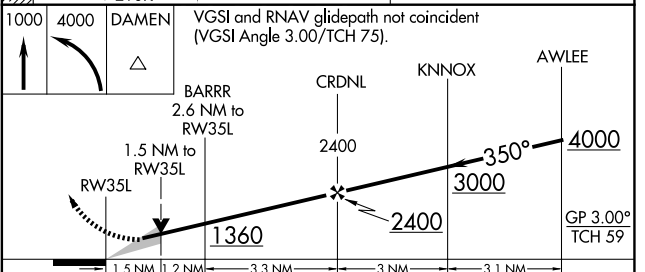
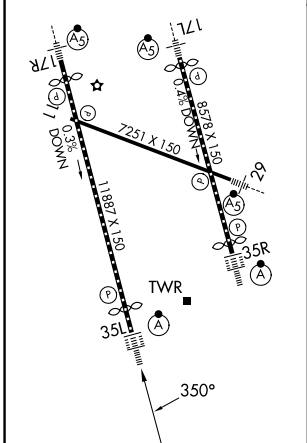
# RNAV (GPS) Y RWY 35L

LOUISVILLE MUHAMMAD ALI INTL (SDF)

<b>RNP APCH - GPS.</b> Simultaneous approach authorized. LNAV procedure NA during simultaneous operations. Use of FD or AP required during simultaneous operations. Circling Rwy 11 NA at night. For uncompensated Baro-VNAV systems, LNAV/VNAV NA below -10°C or above 54°C. For inop ALS, increase LNAV Cats C/D visibility to 1½ SM.		ALSF-2 	<b>MISSED APPROACH:</b> Climb to 1000 then climbing left turn to 4000 direct DAMEN and hold.
D-ATIS <b>118.725</b>	LOUISVILLE APP CON <b>132.075 327.0</b>	LOUISVILLE TOWER <b>124.2 257.8</b>	GND CON <b>121.7 348.6</b>



ELEV 501	<b>D</b>	TDZE 464
HIRL all Rwys TDZL/RCLS Rwys 17L, 17R, 35L, and 35R		



CATEGORY	A	B	C	D
LPV DA		664/18	200 (200-½)	
LNAV/VNAV DA		901/40	437 (400-¾)	
LNAV MDA	1000/24	536 (500-½)	1000/55	536 (500-1)
CIRCLING	1040-1 539 (600-1)	1140-1 639 (700-1)	1160-1¾ 659 (700-1¾)	1400-3 899 (900-3)

SE-1, 11 JUN 2026 to 09 JUL 2026

SE-1, 11 JUN 2026 to 09 JUL 2026