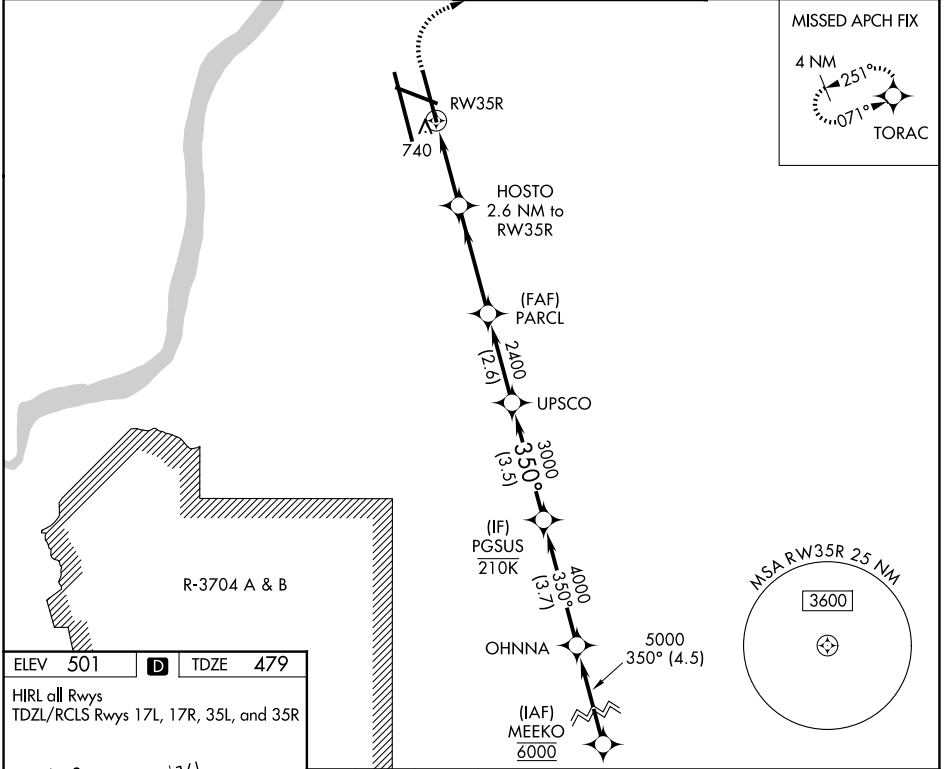


WAAS CH <b>70709</b> <b>W35D</b>	APP CRS <b>350°</b>	Rwy Ldg TDZE Apt Elev	<b>7800</b> <b>479</b> <b>501</b>
--	------------------------	-----------------------------	---

# RNAV (GPS) Y RWY 35R

LOUISVILLE MUHAMMAD ALI INTL (SDF)

RNP APCH - GPS.		ALSF-2		MISSED APPROACH: Climb to 1600 then climbing right turn to 4000 direct TORAC and hold.
<p>Simultaneous approach authorized. LNAV procedure NA during simultaneous operations.</p> <p>Use of FD or AP required during simultaneous operations. Circling Rwy 11 NA at night.</p> <p>For uncompensated Baro-VNAV systems, LNAV/VNAV NA below -13°C or above 54°C.</p>				
D-ATIS <b>118.725</b>	LOUISVILLE APP CON <b>132.075 327.0</b>	LOUISVILLE TOWER <b>124.2 257.8</b>	GND CON <b>121.7 348.6</b>	

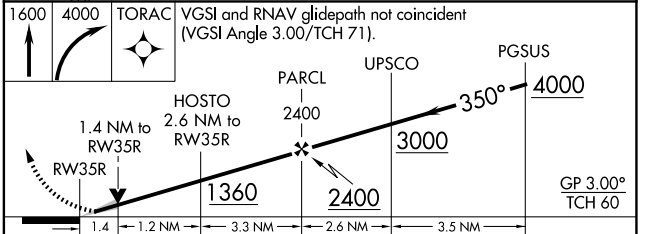
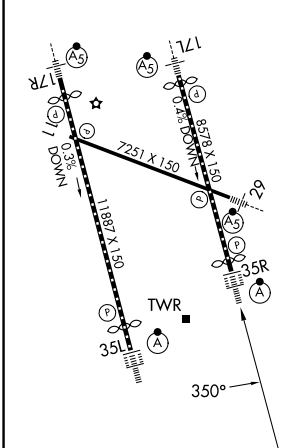


SE-1, 11 JUN 2026 to 09 JUL 2026

SE-1, 11 JUN 2026 to 09 JUL 2026

ELEV <b>501</b>	<b>D</b>	TDZE <b>479</b>
-----------------	----------	-----------------

HIRL all Rwys  
TDZL/RCLS Rwys 17L, 17R, 35L, and 35R



CATEGORY	A	B	C	D
LPV DA		679/18	200 (200-½)	
LNAV/VNAV DA		901/40	422 (400-¾)	
LNAV MDA	1000/24	521 (500-½)	1000/55	521 (500-1)
CIRCLING	1040-1 539 (600-1)	1140-1 639 (700-1)	1160-1¾ 659 (700-1¾)	1400-3 899 (900-3)