

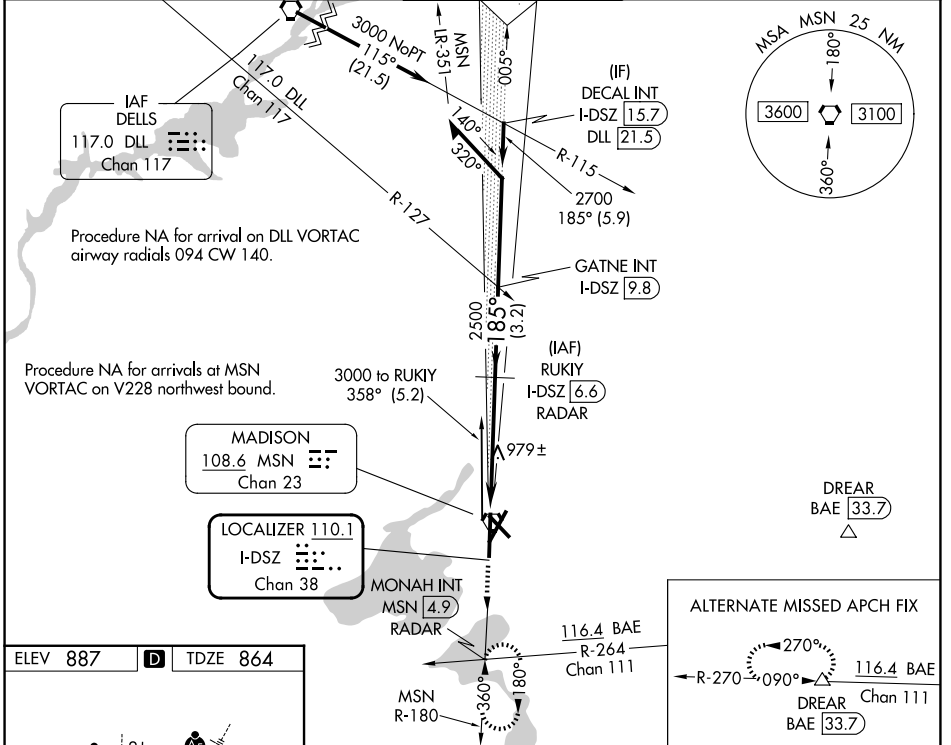
LOC/DME I-DSZ 110.1 Chan 38	APP CRS 185°	Rwy Ldg 8606 TDZE 864 Apt Elev 887
---	------------------------	--

ILS RWY 18 (SA CAT I & II)

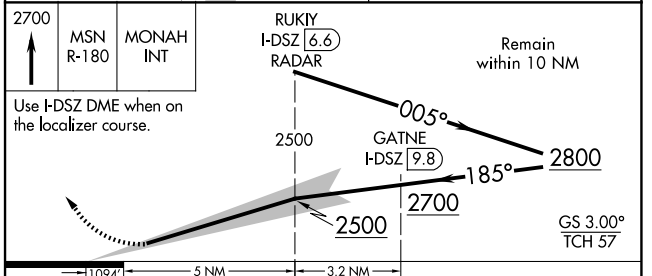
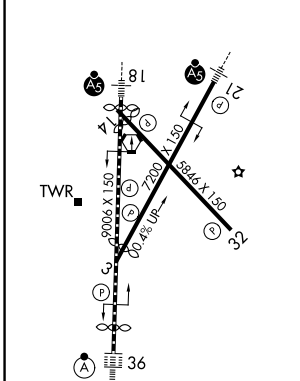
DANE COUNTY RGNL/TRUAX FLD (MSN)

DME or RADAR required.		MALSR	MISSED APPROACH: Climb to 2700 on MSN VORTAC R-180 to MONAH INT/MSN VORTAC 4.9 DME/RADAR and hold.
<p>Procedure NA when tower closed.</p> <p>SA CAT I: Requires specific OPSPEC, MSPEC, or LOA approval and use of HUD to DH.</p> <p>SA CAT II: Reduced lighting: Requires specific OPSPEC, MSPEC, or LOA approval and use of autoland or HUD to touchdown.</p>			

ATIS 124.65 278.3	MADISON APP CON ★ 135.45 343.7	MADISON TOWER ★ 119.3 (CTAF) 0 257.8	GND CON 121.9 348.6	UNICOM 122.95
-----------------------------	--	--	-------------------------------	-------------------------



ELEV 887	D	TDZE 864
----------	----------	----------



CATEGORY	A	B	C	D
S-ILS 18	SA CAT I	RA 153/14	150 DA 1014	
S-ILS 18	SA CAT II	RA 103/12	100 DA 964	

SA CATEGORY I & II ILS SPECIAL AIRCREW & AIRCRAFT CERTIFICATION REQUIRED

EC-3, 11 JUN 2026 to 09 JUL 2026

EC-3, 11 JUN 2026 to 09 JUL 2026