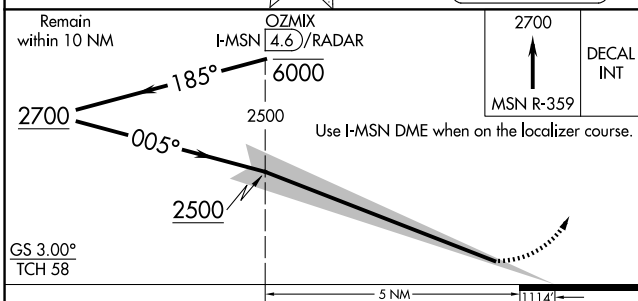
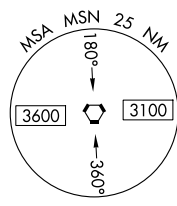
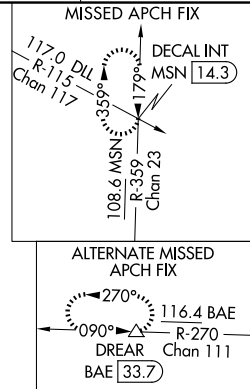
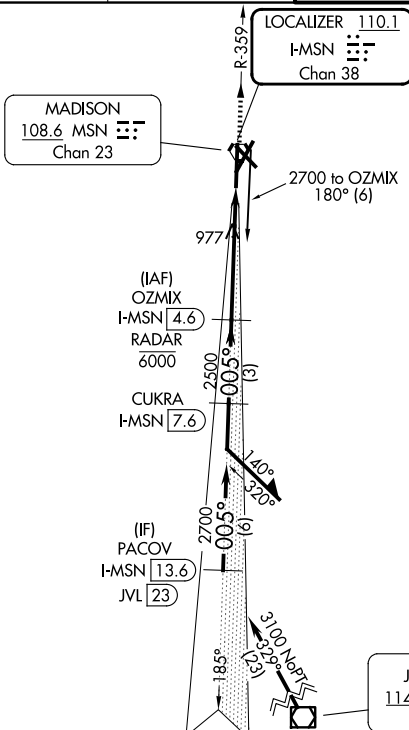


LOC/DME I-MSN 110.1 Chan 38	APP CRS 005°	Rwy Ldg TDZE 862 Apt Elev 887
---	------------------------	---

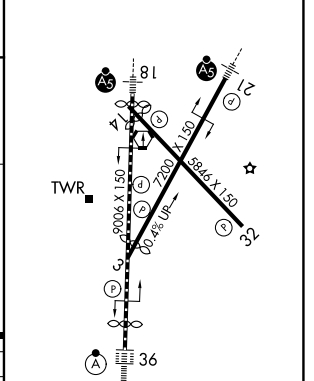
ILS RWY 36 (CAT II & III)

DANE COUNTY RGNL/TRUAX FLD (MSN)

DME or RADAR required. ▼ Procedure NA when tower closed. CAT II: RVR 1000 authorized with specific OPSPEC, MSPEC, or LOA approval and use of autoland or HUD to touchdown. ▲		ALSF-2 A	MISSED APPROACH: Climb to 2700 on MSN VORTAC R-359 to DECAL INT/MSN 14.3 DME and hold.	
ATIS 124.65 278.3	MADISON APP CON★ 135.45 343.7	MADISON TOWER★ 119.3 (CTAF) 257.8	GND CON 121.9 348.6	UNICOM 122.95



ELEV 887	D	TDZE 862
----------	---	----------



CATEGORY	A	B	C	D
S-ILS 36	CAT II RA 109/12 100 DA 962			
S-ILS 36	CAT III RVR 06			

CATEGORY II & III ILS - SPECIAL AIRCREW & AIRCRAFT CERTIFICATION REQUIRED

HIRL all Rwy's
REIL Rwy's 3, 14 and 32

EC-3, 11 JUN 2026 to 09 JUL 2026

EC-3, 11 JUN 2026 to 09 JUL 2026