

LOC/DME I-DSZ 110.1 Chan 38	APP CRS 185°	Rwy Ldg 8606 TDZE 864 Apt Elev 887
---	------------------------	--

ILS or LOC RWY 18

DANE COUNTY RGNL/TRUAX FLD (MSN)

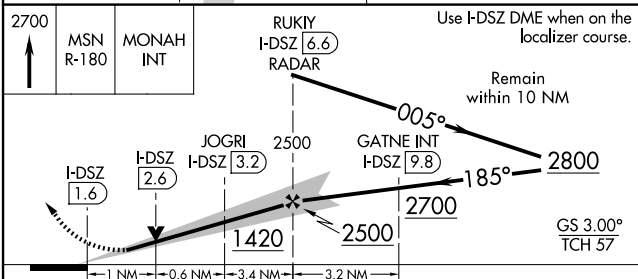
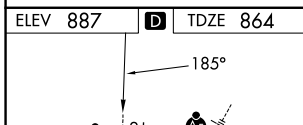
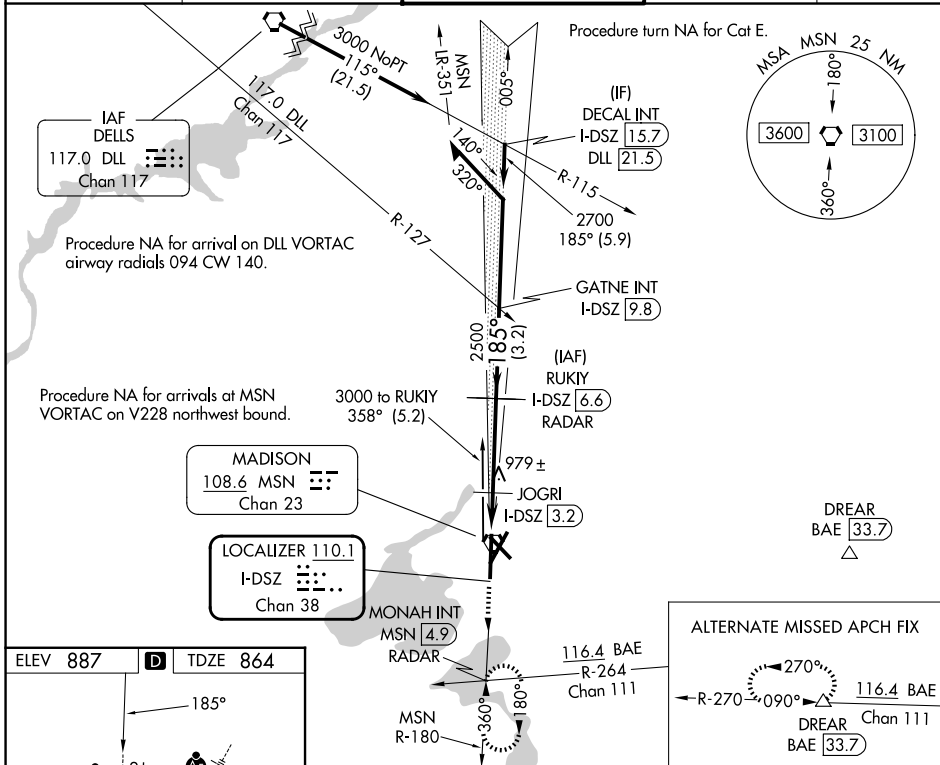
DME or RADAR required.

⚠ For inop ALS, increase S-ILS 18 Cat E visibility to RVR 4000 and S-LOC 18 Cat C/D/E visibility to RVR 5500.
⚠ * RVR 1800 authorized with use of FD or AP or HUD to DA.



MISSED APPROACH: Climb to 2700 on MSN VORTAC R-180 to MONAH INT/ MSN VORTAC 4.9 DME/RADAR and hold.

ATIS 124.65 278.3	MADISON APP CON * 135.45 343.7	MADISON TOWER * 119.3 (CTAF) 0 257.8	GND CON 121.9 348.6	UNICOM 122.95
-----------------------------	--	--	-------------------------------	-------------------------



CATEGORY	A	B	C	D	E
S-ILS 18 *	1064/24 200 (200-1/2)				
S-LOC 18	1240/24	376 (400-1/2)	1240/35	376 (400-5/8)	
CIRCLING	1420-1 533 (600-1)	1460-1 573 (600-1)	1460-1 1/2 573 (600-1 1/2)	1700-2 3/4 813 (900-2 3/4)	1700-3 813 (900-3)

EC-3, 11 JUN 2026 to 09 JUL 2026

EC-3, 11 JUN 2026 to 09 JUL 2026