

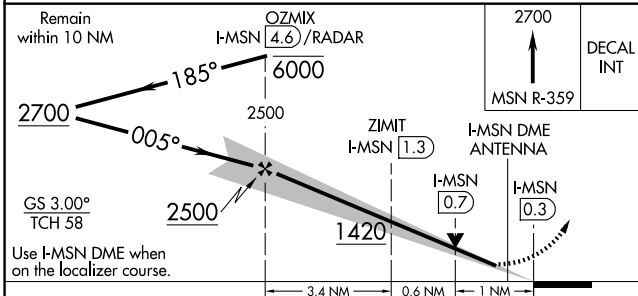
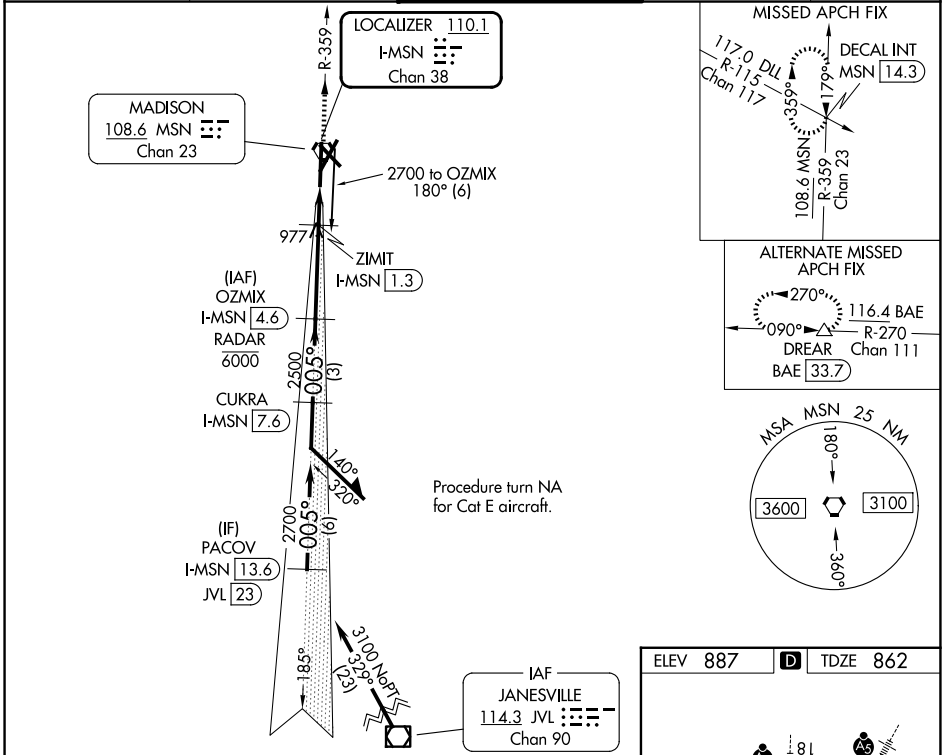
LOC/DME I-MSN 110.1 Chan 38	APP CRS 005°	Rwy Ldg TDZE Apt Elev	8005 862 887
---	------------------------	-----------------------------	---

ILS or LOC/DME RWY 36

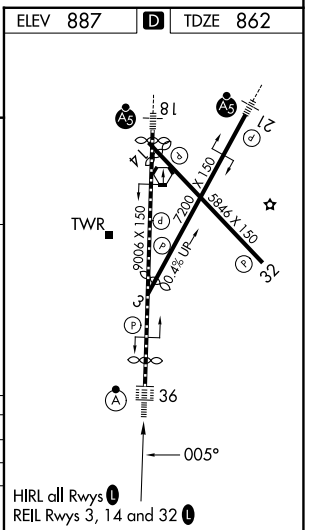
DANE COUNTY RGNL/TRUAX FLD (MSN)

DME or RADAR required.	ALS-F-2	MISSED APPROACH: Climb to 2700 on MSN VORTAC R-359 to DECAL INT/MSN 14.3 DME and hold.
<p>⚠ For inop ALS, increase S-ILS 36 Cat E visibility to RVR 4000 and S-LOC 36 Cat C/D/E visibility to RVR 5500.</p> <p>**RVR 1800 authorized with use of FD or AP or HUD to DA.</p>		

ATIS 124.65 278.3	MADISON APP CON ★ 135.45 343.7	MADISON TOWER ★ 119.3 (CTAF) 0 257.8	GND CON 121.9 348.6	UNICOM 122.95
-----------------------------	--	--	-------------------------------	-------------------------



CATEGORY	A	B	C	D	E
S-ILS 36 **	1062/24 200 (200-½)				
S-LOC 36	1240/24	378 (400-½)	1240/35	378 (400-¾)	
CIRCLING	1420-1 533 (600-1)	1460-1 573 (600-1)	1460-1½ 573 (600-1½)	1700-2¾ 813 (900-¾)	1700-3 813 (900-3)



EC-3, 11 JUN 2026 to 09 JUL 2026

EC-3, 11 JUN 2026 to 09 JUL 2026