

WAAS CH 42522 W18A	APP CRS 185°	Rwy Ldg 8606 TDZE 864 Apt Elev 887
--	------------------------	---

RNAV (GPS) RWY 18

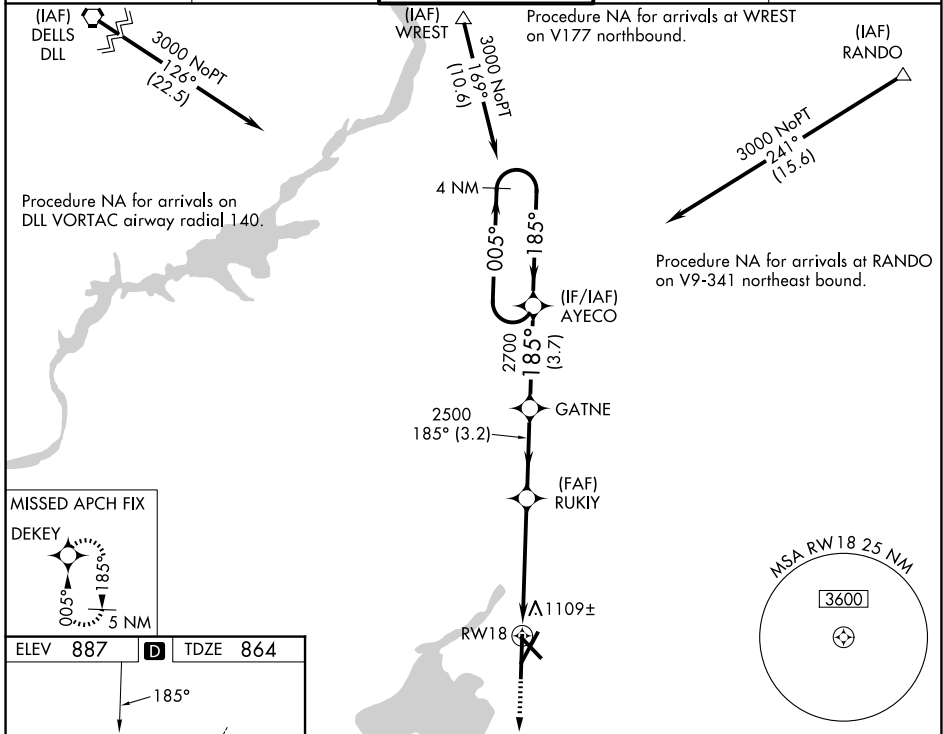
DANE COUNTY RGNL/TRUAX FLD (MSN)

⚠ For uncompensated Baro-VNAV systems, LNAV/VNAV NA below -19°C (-2°F) or above 54°C (130°F), DME/DME RNP-0.3 NA. For inop MALSR, increase LNAV/VNAV all Cats visibility to 1½ mile and LNAV Cat C/D visibility to 1¾ miles.
** RVR 1800 authorized with use of FD or AP or HUD to DA.

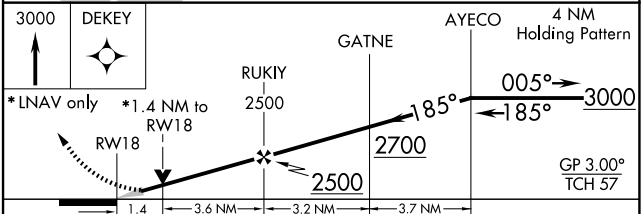
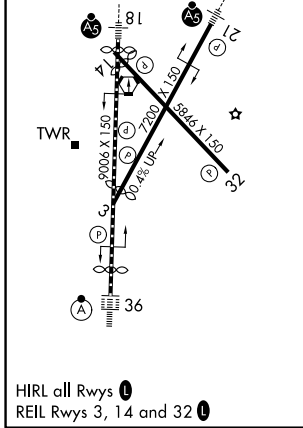
MALSR

MISSED APPROACH: Climb to 3000 direct DEKEY and hold.

ATIS 124.65 278.3	MADISON APP CON* 135.45 343.7	MADISON TOWER* 119.3 (CTAF) 0 257.8	GND CON 121.9 348.6	UNICOM 122.95
-----------------------------	---	---	-------------------------------	-------------------------



ELEV 887	D	TDZE 864
-----------------	----------	-----------------



CATEGORY	A	B	C	D
LPV DA**	1064/24 200 (200-½)			
LNAV/VNAV DA	1360-1¼ 496 (500-1¼)			
LNAV MDA	1360/24	496 (500-½)	1360/55	496 (500-1)
CIRCLING	1420-1 533 (600-1)	1460-1 573 (600-1)	1460-1½ 573 (600-½)	1700-2¾ 813 (900-2¾)

EC-3, 11 JUN 2026 to 09 JUL 2026

EC-3, 11 JUN 2026 to 09 JUL 2026