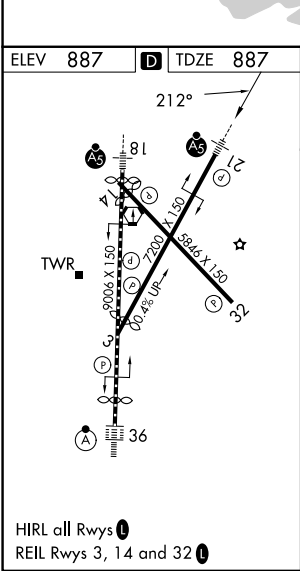
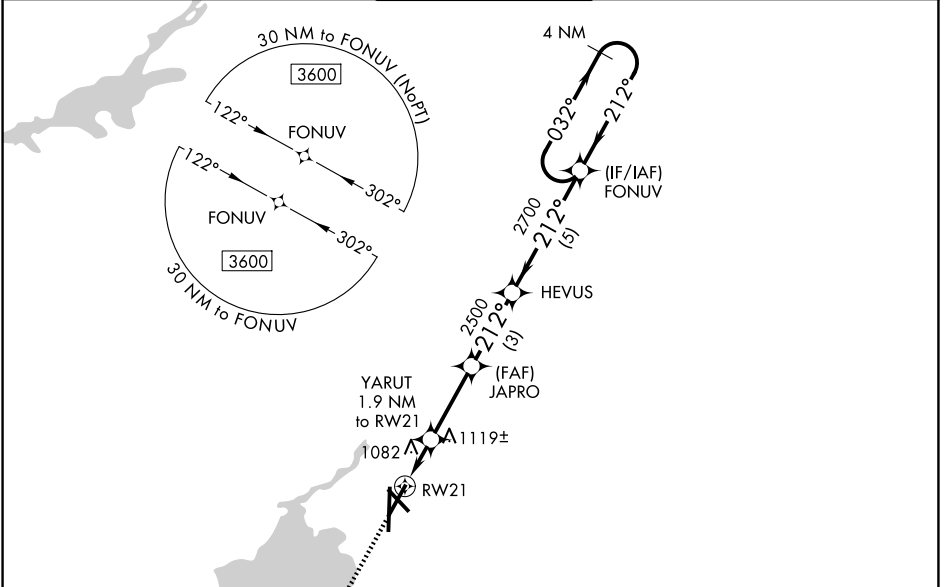


WAAS CH <b>42829</b> <b>W21A</b>	APP CRS <b>212°</b>	Rwy Ldg TDZE <b>887</b> Apt Elev <b>887</b>	<b>7015</b>
--	------------------------	---	-------------

**RNAV (GPS) RWY 21**  
DANE COUNTY RGNL/TRUAX FLD (MSN)

	For uncompensated Baro-VNAV systems, LNAV/VNAV NA below -20°C (-4°F) or above 54°C (130°F). DME/DME RNP-0.3 NA. For inop MALSR, increase LNAV/VNAV all Cats visibility to 1 3/4 mile and LNAV Cat C/D visibility to 1 1/2 mile.	MALSR 	MISSED APPROACH: Climb to 3600 direct WIROD and hold.

ATIS <b>124.65 278.3</b>	MADISON APP CON* <b>135.45 343.7</b>	MADISON TOWER* <b>119.3 (CTAF) 0 257.8</b>	GND CON <b>121.9 348.6</b>	UNICOM <b>122.95</b>
-----------------------------	---	---	-------------------------------	-------------------------



ELEV 887	<b>D</b>	TDZE 887				
3600	WIROD	* LNAV only	FONUV	4 NM Holding Pattern		
↑		YARUT 1.9 NM to RW21	JAPRO 2500	HEVUS 2700	3600	
		* 1.4 NM to RW21	* 1540	212°	032°	GP 3.00° TCH 53
		1.4 NM	0.5	3 NM	5 NM	
CATEGORY	A		B		C	
LPV DA	1087-1/2		200 (200-1/2)			
LNAV/VNAV DA	1412-1 3/8		525 (600-1 3/8)			
LNAV MDA	1380-1/2		493 (500-1/2)		1380-1 493 (500-1)	
CIRCLING	1420-1 533 (600-1)	1460-1 573 (600-1)	1460-1 1/2 573 (600-1 1/2)	1700-2 3/4 813 (900-2 3/4)		

EC-3, 11 JUN 2026 to 09 JUL 2026

EC-3, 11 JUN 2026 to 09 JUL 2026