

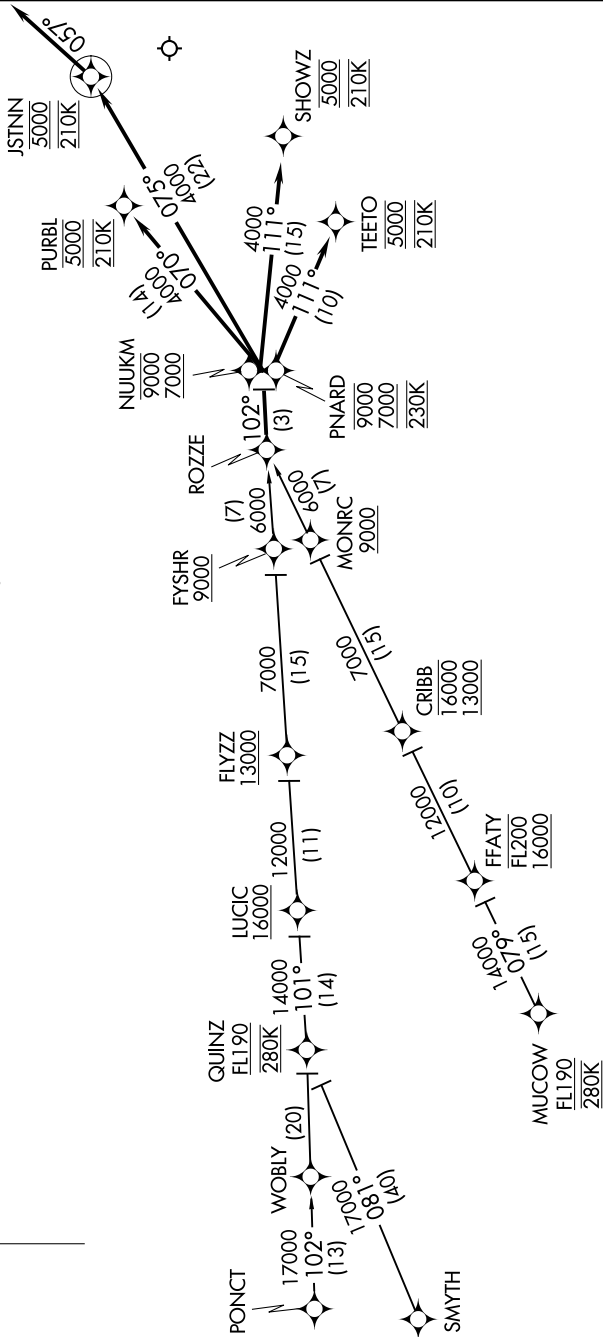
# ROZZE TWO ARRIVAL (RNAV)

AL-246 (FAA)

MANCHESTER BOSTON RGNL (MHT)  
MANCHESTER, NEW HAMPSHIRE

BOSTON CENTER  
135.32 360.6  
BOSTON APP CON  
124.9 269.075  
ATIS  
119.55  
MANCHESTER TOWER  
121.3 239.025

NOTE: RADAR required.  
NOTE: RNAV 1.  
NOTE: DME/DME/IRU or GPS required.  
NOTE: Turbopjet aircraft only.  
NOTE: MUCOW and CRIBB transitions are ATC assigned.



(NARRATIVE ON FOLLOWING PAGE)

NOTE: Chart not to scale.

# ROZZE TWO ARRIVAL (RNAV)

MANCHESTER, NEW HAMPSHIRE  
MANCHESTER BOSTON RGNL (MHT)

NE-1, 11 JUN 2026 to 09 JUL 2026

NE-1, 11 JUN 2026 to 09 JUL 2026