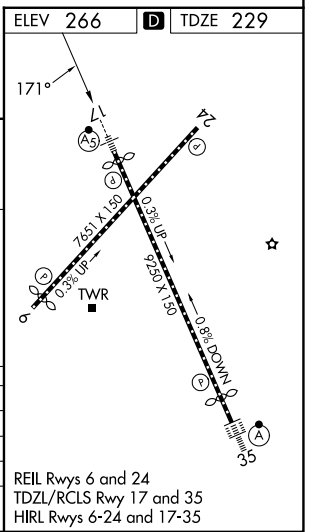
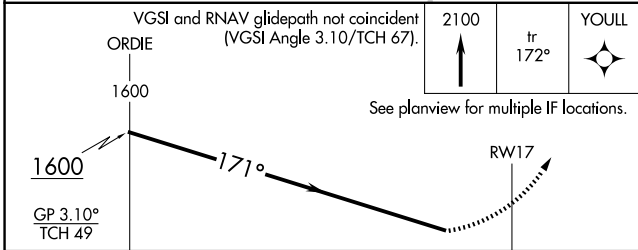
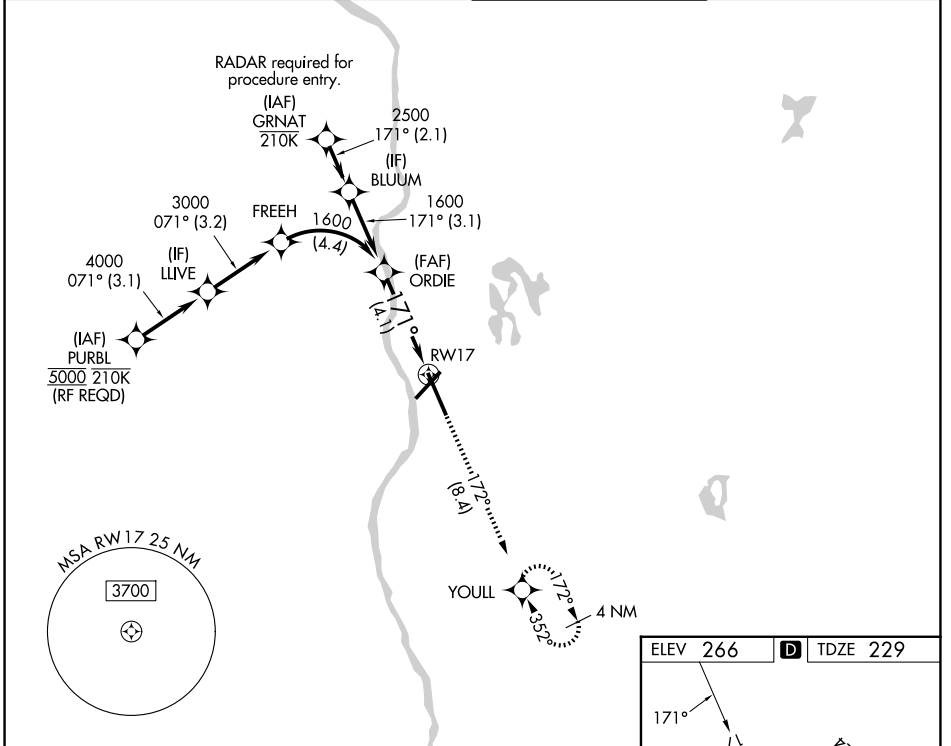


APP CRS <b>171°</b>	Rwy Ldg TDZE Apt Elev	<b>8914</b> <b>229</b> <b>266</b>
------------------------	-----------------------------	---

# RNAV (RNP) Z RWY 17

MANCHESTER BOSTON RGNL (MHT)

For uncompensated Baro-VNAV systems, procedure NA below -20°C (-4°F) or above 48°C (118°F). When local altimeter setting not received, procedure NA. GPS required. For inop MALS, increase RNP 0.11 all Cats visibility to RVR 6000, RNP 0.26 all Cats visibility to 1¾ miles, and RNP 0.30 all Cats visibility to 2 miles.	MALS 	MISSED APPROACH: Climb to 2100 on track 172° to YOULL and hold.	
			ATIS <b>119.55</b>



CATEGORY	A	B	C	D
RNP 0.11 DA		604/40	375 (400-¾)	
RNP 0.26 DA		761/60	532 (500-1¼)	
RNP 0.30 DA		835-1½	606 (600-1½)	

**AUTHORIZATION REQUIRED**

NE-1, 11 JUN 2026 to 09 JUL 2026

NE-1, 11 JUN 2026 to 09 JUL 2026