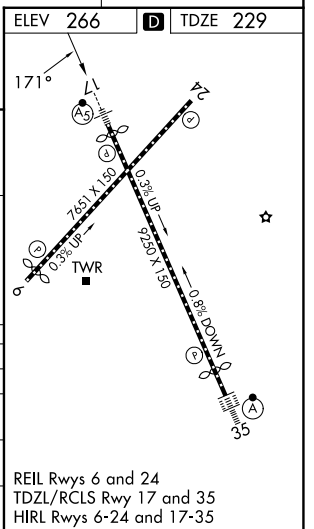
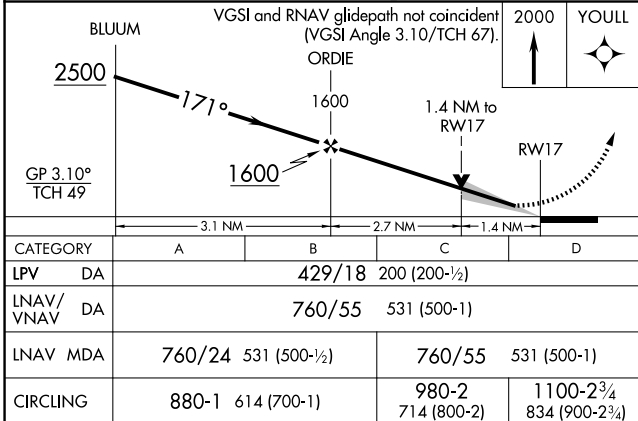
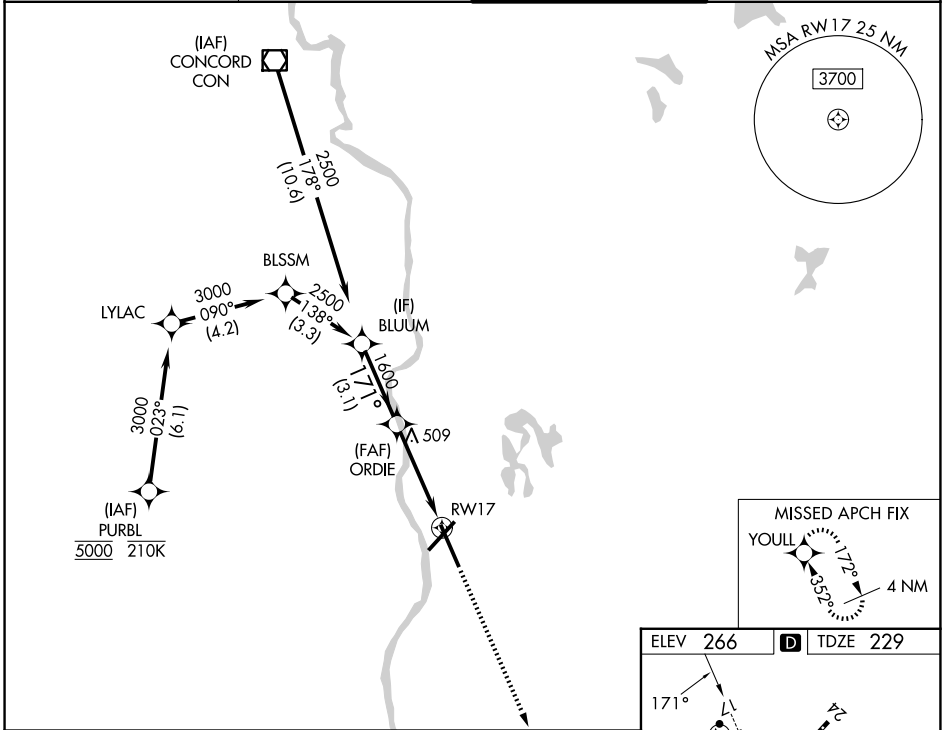


WAAS CH 93807 W17A	APP CRS 171°	Rwy Ldg 8914 TDZE 229 Apt Elev 266
--	------------------------	---

RNAV (GPS) Y RWY 17

MANCHESTER BOSTON RGNL (MHT)

RNP APCH-GPS.		MALSR	MISSED APPROACH: Climb to 2000 direct YOULL and hold.
▼ For uncompensated Baro-VNAV systems, LNAV/VNAV NA below -19°C or above 54°C. ▲ For inop ALS, increase LNAV CAT A/B visibility to RVR 5500.			
ATIS 119.55	BOSTON APP CON 124.9 269.075	MANCHESTER TOWER 121.3 239.025	GND CON 121.9



NE-1, 11 JUN 2026 to 09 JUL 2026

NE-1, 11 JUN 2026 to 09 JUL 2026