

WAAS CH 53609 W26A	APP CRS 259°	Rwy Ldg TDZE Apt Elev	7815 548 565
--	------------------------	-----------------------------	---

RNAV (GPS) RWY 26

EASTERN WV RGNL/SHEPHERD FLD (MRB)

RNP APCH - GPS.

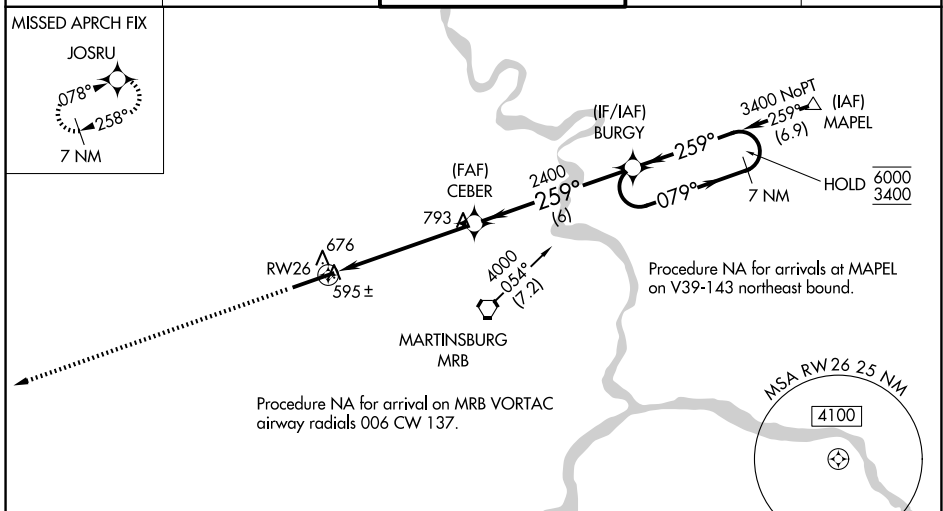
▼ Baro-VNAV and VDP NA when using HGR altimeter setting. For uncompensated Baro-VNAV systems, LNAV/VNAV NA below -16°C or above 54°C.

▲ When local altimeter setting not received, use HGR altimeter setting: increase LPV DA to 868 feet; increase LNAV/VNAV DA to 1283 feet and all visibilities ¼ SM; increase all MDAs 80 feet and LNAV visibility Cats C/D/E ¼ SM, and Circling visibility Cats C/D ¼ SM. For inop ALS, increase LPV Cat E visibility to ¾, LNAV/VNAV Cat E to 2¼, and LNAV Cat E to 1½. For inop ALS when using HGR altimeter setting, increase LPV all Cats visibility to 1, LNAV/VNAV Cat E visibility to 2½, and LNAV Cat E visibility to 1¾.

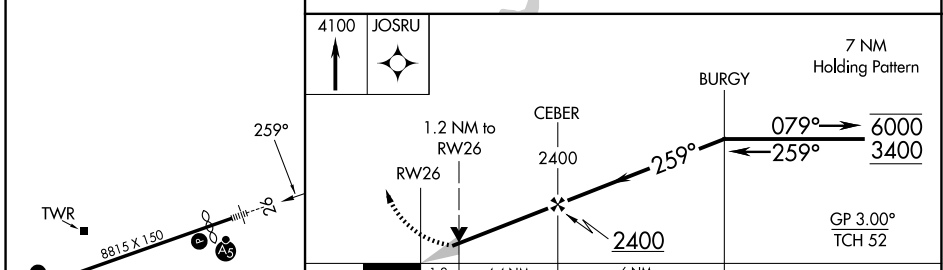
MALS R

MISSED APPROACH: Climb to 4100 direct JOSRU and hold, continue climb-in-hold to 4100.

ASOS 119.925	POTOMAC APP CON 126.825 239.025	MARTINSBURG TOWER ★ 124.3 (CTAF) 0 233.7	GND CON 121.8 257.65	UNICOM 122.95
------------------------	---	--	--------------------------------	-------------------------



ELEV 565	D	TDZE 548
----------	----------	----------



CATEGORY	A	B	C	D	E
LPV DA	798-½		250 (300-½)		
LNAV/VNAV DA	1213-1¾		665 (700-1¾)		
LNAV MDA	980-½	432 (500-½)	980-¾ 432 (500-¾)	980-1	432 (500-1)
CIRCLING	1100-1 535 (600-1)	1240-1 675 (700-1)	1240-2 675 (700-2)	1320-2½ 755 (800-2½)	2180-3 1615 (1700-3)

NE-4, 11 JUN 2026 to 09 JUL 2026

NE-4, 11 JUN 2026 to 09 JUL 2026