

NE-4, 11 JUN 2026 to 09 JUL 2026

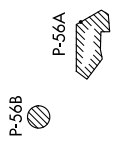
TOP ALTITUDE:
 3000

ASOS 119.925
 CLNC DEL
 121.8 257.65
 132.075 269.075 (When Tower Closed)
 GND CON
 121.8 257.65
 MARTINSBURG TOWER ★
 124.3 (CTAF) 233.7
 POTOMAC DEP CON
 126.825 239.025

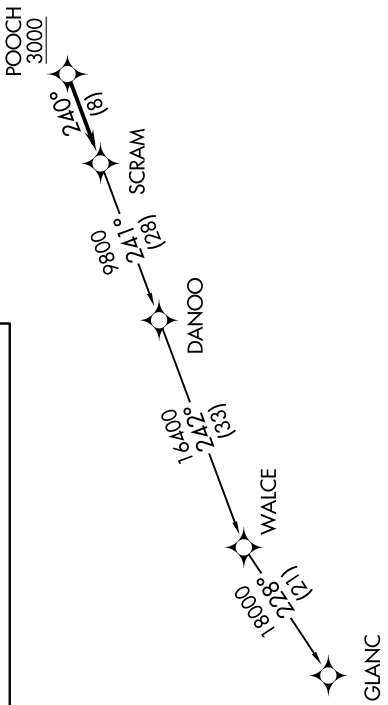
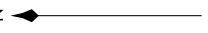
DEPARTURE ROUTE DESCRIPTION
 Climb on heading assigned by ATC, expect RADAR vectors to POOCH, then on track 240° to SCRAM, thence
 as depicted. Maintain 3000, expect clearance to filed altitude within ten (10) minutes after departure.

GLANC TRANSITION (SCRAM6.GLANC):

TAKEOFF MINIMUMS
 Rwy 8: Standard.
 Rwy 26: Standard with a minimum climb of 225' per NM to 2100.



NOTE: RNAV 1.
NOTE: RADAR required.
NOTE: DME/DME/IRU or GPS required.
NOTE: Turbo-jets only.
NOTE: Takeoff Rwy 8, if issued an ATC heading that requires a westbound turn, climb heading 081° to 1200 prior to turning for obstacle avoidance.
NOTE: Takeoff Rwy 26, if issued an ATC heading that requires a right turn, climb heading 261° to 2400 prior to turning for obstacle avoidance.



NOTE: Chart not to scale.

NE-4, 11 JUN 2026 to 09 JUL 2026