

(CSTAL.CSTAL3) 25303

AL-257 (FAA)

CSTAL THREE ARRIVAL (RNAV) Arrival Routes

MIAMI, FLORIDA

MIAMI APP CON
124.85 263.025
KHST ATIS*
132.275 269.9
MIA D-ATIS
119.15
TMB ATIS
124.0

RNAV 1 - DME/DME/IRU or GPS.

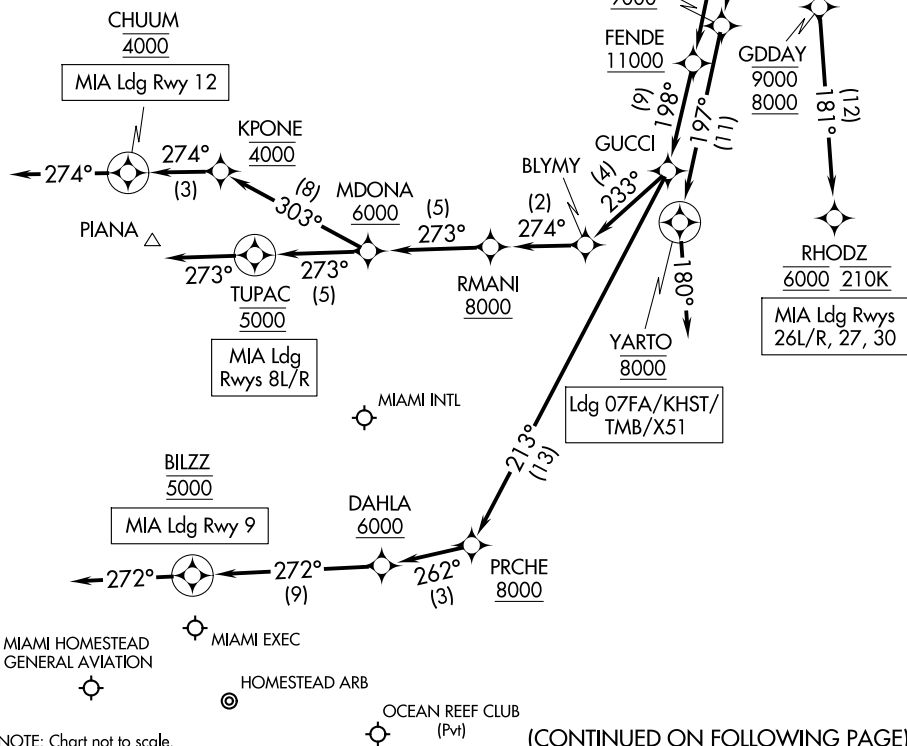
RADAR required.

NOTE: Jet aircraft only, excluding EA50, E50P, SF50, C510, C525 aircraft, which should file TARPEN RNAV STAR.

NOTE: Landing east use Rwy 12 Transition, landing west use Rwy 26R Transition. Expect Rwy assignment from MIA approach prior to CSTAL.

NOTE: DDANY Transition for MCO, ORL, SFB, ISM, LEE Departures only.

NOTE: Do not file GREARD or XPRSO Transition - to be assigned by ATC.



NOTE: Chart not to scale.

(CONTINUED ON FOLLOWING PAGE)

SE-3, 11 JUN 2026 to 09 JUL 2026

SE-3, 11 JUN 2026 to 09 JUL 2026

CSTAL THREE ARRIVAL (RNAV) Arrival Routes

MIAMI, FLORIDA

(CSTAL.CSTAL3) 12JUN25