

LOC/DME I-MKE <b>110.3</b> Chan <b>40</b>	APP CRS <b>011°</b>	Rwy Ldg TDZE <b>704</b> Apt Elev <b>728</b>	<b>9080</b>
---	------------------------	---	-------------

# ILS RWY 1L (CAT II & III)

## GENERAL MITCHELL INTL (MKE)

DME or RADAR required.

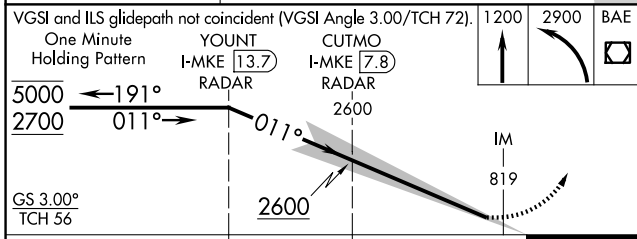
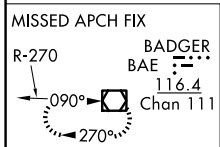
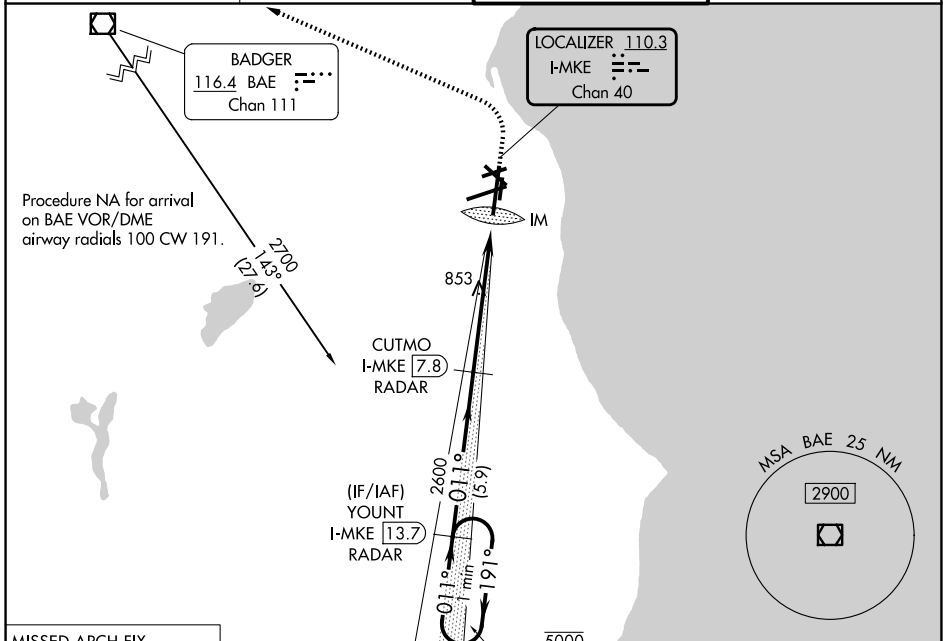
ALSF-2  
MISSED APPROACH: Climb to 1200 then climbing left turn to 2900 direct BAE VOR/DME and hold.

D-ATIS  
**126.4**

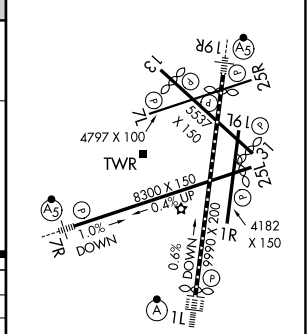
MILWAUKEE APP CON  
**126.5 307.0**

MILWAUKEE TOWER  
**124.575 269.05**

GND CON  
**121.8 263.125**



ELEV <b>728</b>	<b>D</b> TDZE <b>704</b>
TDZ/CL Rwy 1L REIL Rws 1R, 7L, 13, 25L, 25R and 31	



CATEGORY	A	B	C	D
S-ILS 1L	CAT II RA 98/12 100 DA 804			
S-ILS 1L	CAT III RVR 06			

### CATEGORY II & III ILS - SPECIAL AIRCREW & AIRCRAFT CERTIFICATION REQUIRED

HIRL Rws 1L-19R and 7R-25L  
MIRL Rws 1R-19L, 13-31, and 7L-25R