

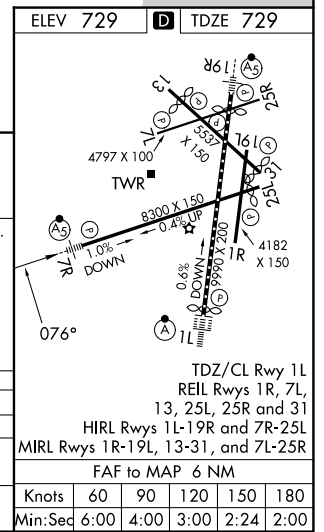
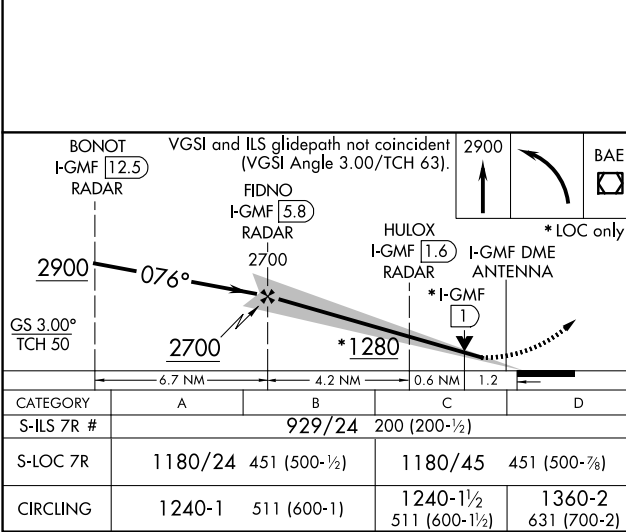
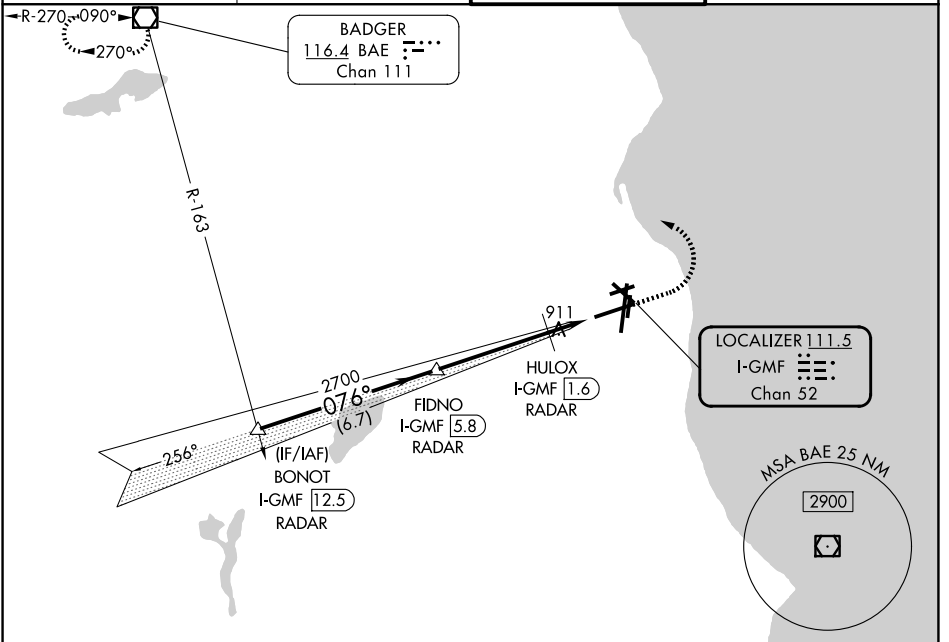
LOC/DME I-GMF 111.5 Chan 52	APP CRS 076°	Rwy Ldg 8012 TDZE 729 Apt Elev 729
---	------------------------	---

ILS or LOC RWY 7R

GENERAL MITCHELL INTL (MKE)

RADAR required for procedure entry. DME or RADAR required.	MALSR 	MISSED APPROACH: Climb to 2900 then left turn direct BAE VOR/DME and hold.
# RVR 1800 authorized with use of FD or AP or HUD to DA.		

D-ATIS 126.4	MILWAUKEE APP CON 126.5 307.0	MILWAUKEE TOWER 124.575 269.05	GND CON 121.8 263.125
------------------------	---	--	---------------------------------



EC-3, 11 JUN 2026 to 09 JUL 2026

EC-3, 11 JUN 2026 to 09 JUL 2026

CATEGORY	A	B	C	D
S-ILS 7R #	929/24 200 (200-½)			
S-LOC 7R	1180/24	451 (500-½)	1180/45	451 (500-¾)
CIRCLING	1240-1	511 (600-1)	1240-1½ 511 (600-½)	1360-2 631 (700-2)

ELEV 729	TDZE 729
TDZ/CL Rwy 1L RIL Rwy 1R, 7L, 13, 25L, 25R and 31 HIRL Rwy 1L-19R and 7R-25L MRL Rwy 1R-19L, 13-31, and 7L-25R FAF to MAP 6 NM	
Knots	60 90 120 150 180
Min:Seq	6:00 4:00 3:00 2:24 2:00