

LOC/DME I-PXY 111.5 Chan 52	APP CRS 256°	Rwy Ldg 7867 TDZE 683 Apt Elev 729
---	------------------------	---

LOC RWY 25L

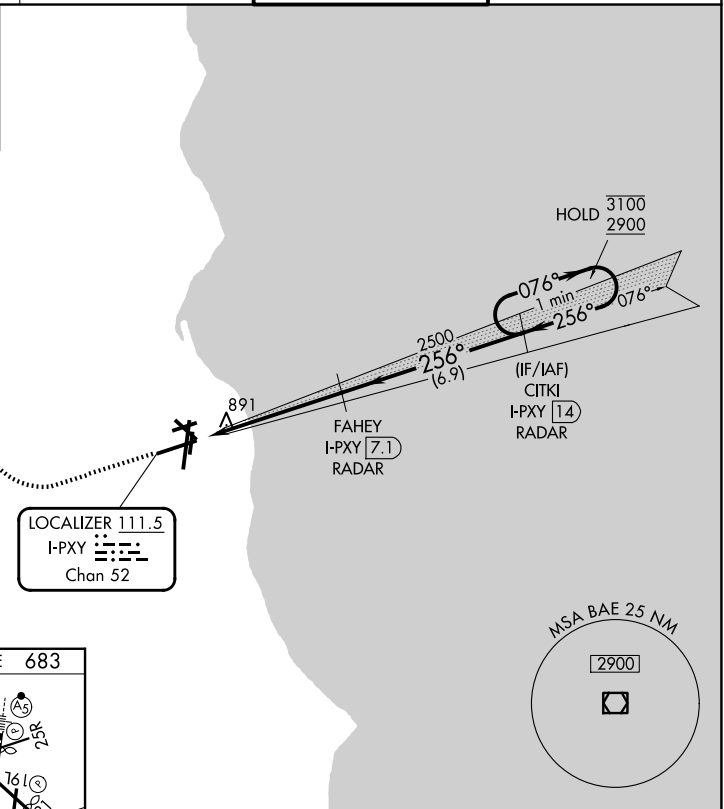
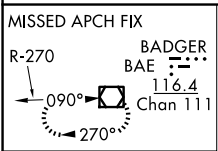
GENERAL MITCHELL INTL (MKE)

RADAR required for procedure entry. DME or RADAR required.

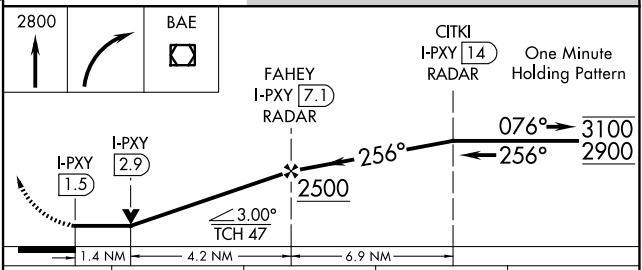
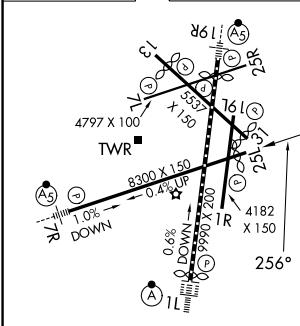
▼ Rwy 25L helicopter visibility reduction below 3/4 SM NA.

MISSED APPROACH: Climb to 2800 then right turn direct BAE VOR/DME and hold.

D-ATIS 126.4	MILWAUKEE APP CON 126.5 307.0	MILWAUKEE TOWER 124.575 269.05	GND CON 121.8 263.125
------------------------	---	--	---------------------------------



ELEV 729	D	TDZE 683
----------	----------	----------



TDZ/CL Rwy 1L
REIL Rwys 1R, 7L, 13, 25L, 25R, and 31
HIRL Rwys 1L-19R and 7R-25L
MIRL Rwys 1R-19L, 13-31, and 7L-25R

FAF to MAP 5.6 NM

Knots	60	90	120	150	180
Min:Sec	5:36	3:44	2:48	2:14	1:52

CATEGORY	A	B	C	D
S-LOC 25L	1160-1 477 (500-1)		1160-1 3/8 477 (500-1 3/8)	
CIRCLING	1240-1 511 (600-1)		1240-1 1/2 511 (600-1 1/2)	1360-2 631 (700-2)

EC-3, 11 JUN 2026 to 09 JUL 2026

EC-3, 11 JUN 2026 to 09 JUL 2026