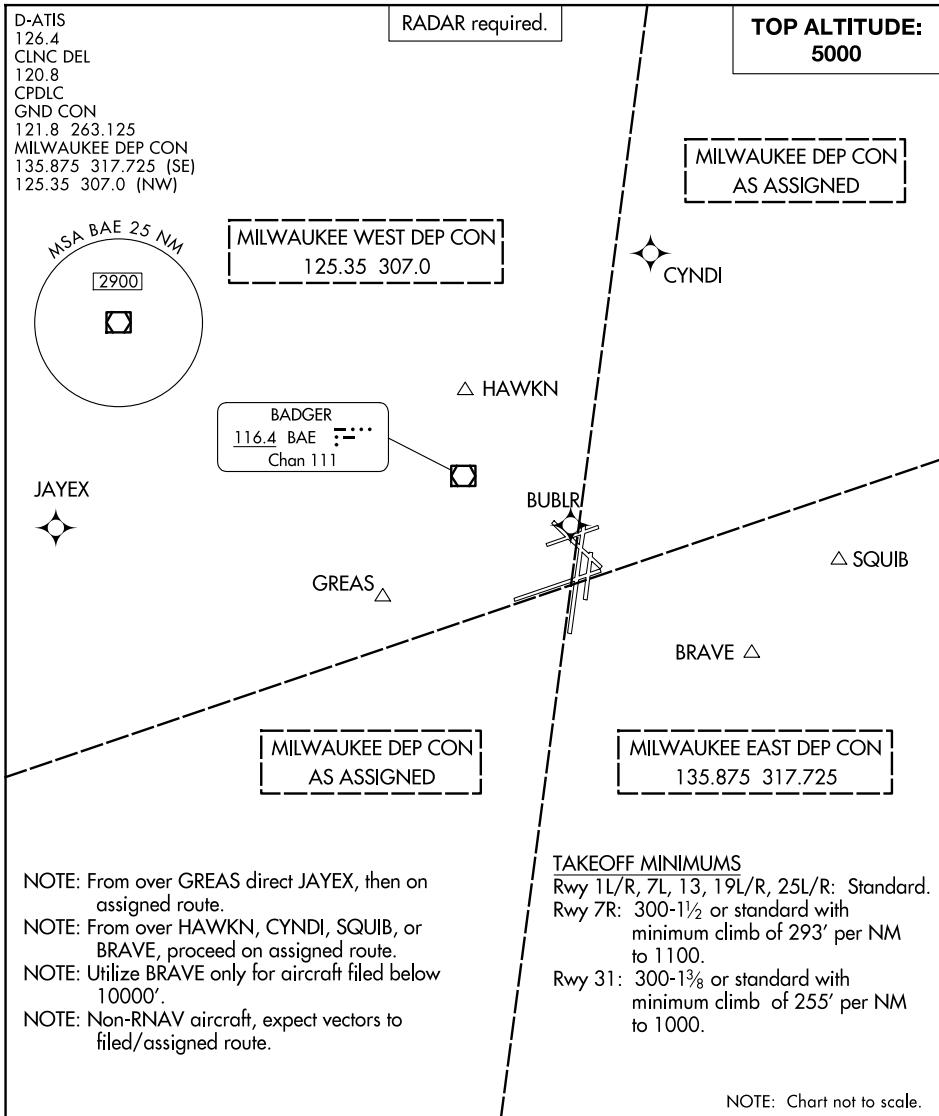


# MITCHELL NINE DEPARTURE

AL-262 (FAA)

GENERAL MITCHELL INTL (MKE)  
MILWAUKEE, WISCONSIN



EC-3, 11 JUN 2026 to 09 JUL 2026

EC-3, 11 JUN 2026 to 09 JUL 2026



## DEPARTURE ROUTE DESCRIPTION

TAKEOFF ALL RUNWAYS: Turn to assigned heading, maintain 5000 or assigned altitude. Expect RADAR vectors to join filed/assigned route. Expect clearance to filed altitude ten minutes after departure.

# MITCHELL NINE DEPARTURE