

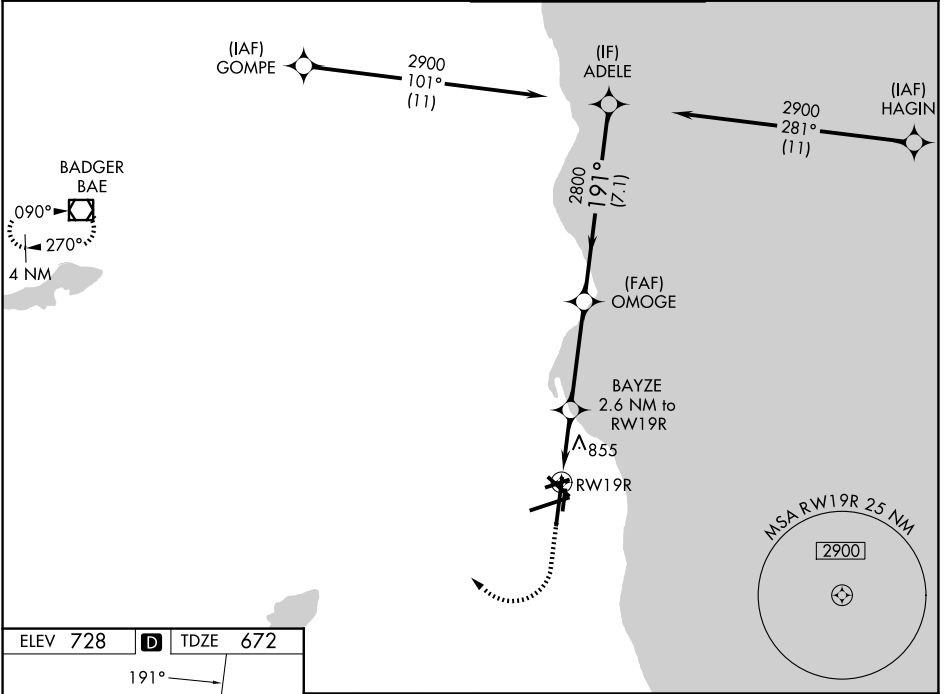
WAAS CH 99322 W19A	APP CRS 191°	Rwy Ldg TDZE Apt Elev	9205 672 728
--	------------------------	-----------------------------	---

RNAV (GPS) RWY 19R

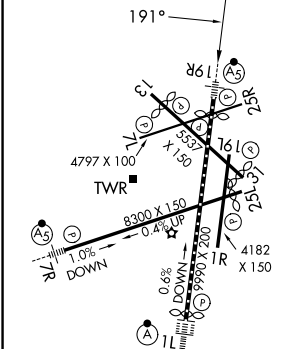
GENERAL MITCHELL INTL (MKE)

RNP APCH - GPS.	MALSRL 	MISSED APPROACH: Climb to 2000 then climbing right turn to 2800 direct BAE VOR/DME and hold.
<p>▼ For uncompensated Baro-VNAV systems, LNAV/VNAV NA below -19°C or above 54°C. For inop ALS, increase LNAV/VNAV all Cats visibility to 1½ SM, LNAV Cats C/D visibility to 1¾ SM. *RVR 1800 authorized with use of FD or AP or HUD to DA.</p>		

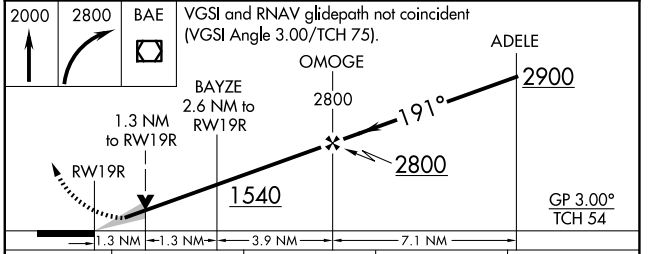
D-ATIS 126.4	MILWAUKEE APP CON 126.5 307.0	MILWAUKEE TOWER 124.575 269.05	GND CON 121.8 263.125
------------------------	---	--	---------------------------------



ELEV 728	D	TDZE 672
----------	----------	----------



TDZL/RCLS Rwy 1L
REIL Rwy 1R, 7L,
13, 25R, 25L and 31
HIRL Rwy 1L-19R and 7R-25L
MIRL Rwy 1R-19L, 13-31, and 7L-25R



CATEGORY	A	B	C	D
LPV DA*	872/24		200 (200-½)	
LNAV/VNAV DA	1160/50		488 (500-1)	
LNAV MDA	1160/24	488 (500-½)	1160/50	488 (500-1)
CIRCLING	1240-1	512 (600-1)	1240-1½ 512 (600-1½)	1360-2 632 (700-2)

EC-3, 11 JUN 2026 to 09 JUL 2026

EC-3, 11 JUN 2026 to 09 JUL 2026